

AUSTRALIA'S SOUTH WEST HOLIDAY PLANNER 2025

AUSTRALIA'S

**SOUTH
WEST** DREAM
DEEPER



WESTERN
AUSTRALIA
WALKING ON A DREAM

AUSTRALIA'S
**SOUTH
WEST** DREAM
DEEPER

- BIBBULMUN TRACK
- CAPE TO CAPE TRACK
- MUNDA BIDDI TRAIL
- NATIONAL PARK



Map information is not comprehensive and is for illustration purposes only.

PLAN YOUR ROAD TRIP

DISTANCES BETWEEN TOWNS IN KILOMETRES AND HOURS

Tip: Take a break from driving every 2 hours to stay alert and avoid driving at dawn and dusk, when wildlife is more active on roads.

| | Perth | Bunbury | Busselton | Margaret River | Augusta | Nannup | Bridgetown | Manjimup | Pemberton | Walpole | Denmark | Albany | Mount Barker | Kojonup | Bremer Bay |
|----------------|----------------------|----------------------|----------------------|----------------------|----------------------|----------------------|----------------------|----------------------|----------------------|----------------------|----------------------|----------------------|----------------------|----------------------|----------------------|
| Perth | — | 166km 2hrs | 222km 2hrs 40mins | 262km 3hrs | 315km 3hrs 40mins | 267km 3hrs 10mins | 253km 2hrs 50mins | 293km 3hrs 30mins | 323km 3hrs 40mins | 418km 5hrs | 421km 4hrs 40mins | 413km 4hrs 30mins | 363km 4hrs 5mins | 260km 3hrs | 503km 5hrs 30mins |
| Bunbury | 166km 2hrs | — | 52km 40mins | 101km 1hr 15mins | 145km 1hr 40mins | 97km 1hr 10mins | 95km 1hr 15mins | 132km 1hr 35mins | 162km 2hrs | 256km 3hrs 5mins | 331km 3hrs 40mins | 348km 3hrs 40mins | 289km 3hrs 10mins | 197km 2hrs 15mins | 431km 5hrs |
| Busselton | 222km 2hrs 40mins | 52km 40mins | — | 50km 40mins | 90km 1hr 10mins | 60km 40mins | 107km 1hr 15mins | 131km 1hr 35mins | 138km 1hr 40mins | 243km 3hrs | 312km 3hrs 30mins | 332km 3hrs 40mins | 293km 3hrs 15mins | 217km 2hrs 30mins | 464km 5hrs |
| Margaret River | 262km 3hrs | 101km 1hr 15mins | 50km 40mins | — | 91km 30mins | 70km 50mins | 150km 1hr 30mins | 130km 1hr 35mins | 139km 1hr 40mins | 253km 3hrs | 325km 3hrs 45mins | 379km 3hrs 50mins | 292km 3hrs 15mins | 267km 2hrs 45mins | 478km 5hrs 15mins |
| Augusta | 315km 3hrs 40mins | 91km 1hr 40mins | 40km 1hr 10mins | 40km 30mins | — | 87km 1hr | 133km 1hr 35mins | 129km 1hr 35mins | 124km 1hr 30mins | 247km 2hrs 55mins | 309km 3hrs 35mins | 355km 3hrs 55mins | 292km 3hrs 15mins | 240km 2hrs 50mins | 490km 5hrs 20mins |
| Nannup | 267km 3hrs 10mins | 97km 1hr 10mins | 60km 40mins | 70km 50mins | 87km — | — | 46km 40mins | 53km 45mins | 78km 1hr | 183km 2hrs 10mins | 252km 2hrs 50mins | 272km 3hrs | 222km 2hrs 30mins | 153km 1hr 50mins | 408km 4hrs 25mins |
| Bridgetown | 253km 2hrs 50mins | 95km 1hr 15mins | 107km 1hr 15mins | 150km 1hr 30mins | 133km 1hr 35mins | 46km 45mins | — | 37km 30mins | 68km 50mins | 163km 1hr 55mins | 221km 2hrs 30mins | 274km 2hrs 45mins | 192km 2hrs 5mins | 117km 1hr 40mins | 355km 3hrs 55mins |
| Manjimup | 293km 3hrs 30mins | 132km 1hr 35mins | 131km 1hr 35mins | 130km 1hr 35mins | 129km 1hr 35mins | 53km 45mins | 37km 30mins | — | 31km 20mins | 119km 1hr 20mins | 184km 2hrs 10mins | 213km 2hrs 15mins | 161km 1hr 40mins | 145km 1hr 40mins | 331km 3hrs 30mins |
| Pemberton | 323km 3hrs 40mins | 162km 2hrs | 138km 1hr 40mins | 139km 1hr 40mins | 124km 1hr 30mins | 78km 1hr | 68km 50mins | 31km 20mins | — | 126km 1hr 30mins | 186km 2hrs 20mins | 239km 2hrs 40mins | 182km 2hrs | 184km 2hrs 10mins | 367km 4hrs |
| Walpole | 418km 5hrs | 256km 3hrs 5mins | 236km 3hrs | 253km 3hrs | 249km 2hrs 55mins | 184km 2hrs 10mins | 163km 1hr 55mins | 119km 1hr 20mins | 126km 1hr 30mins | — | 74km 1hr | 127km 1hr 35mins | 122km 1hr 30mins | 229km 2hrs 35mins | 300km 3hrs 20mins |
| Denmark | 421km 4hrs 40mins | 331km 3hrs 40mins | 312km 3hrs 30mins | 325km 3hrs 45mins | 309km 3hrs 35mins | 252km 2hrs 50mins | 221km 2hrs 30mins | 184km 2hrs 10mins | 186km 2hrs 20mins | 74km 1hrs | — | 53km 45mins | 57km 40mins | 157km 1hr 40mins | 229km 3hrs 20mins |
| Albany | 413km 4hrs 30mins | 348km 3hrs 40mins | 332km 3hrs 40mins | 379km 3hrs 50mins | 355km 3hrs 55mins | 272km 3hrs | 274km 2hrs 45mins | 213km 2hrs 15mins | 239km 2hrs 40mins | 127km 1hr 35mins | 53km 45mins | — | 53km 40mins | 155km 1hr 40mins | 181km 1hr 55mins |
| Mount Barker | 363km 4hrs 5mins | 289km 3hrs 10mins | 293km 3hrs 15mins | 292km 3hrs 15mins | 292km 3hrs 15mins | 222km 2hrs 30mins | 192km 2hrs 5mins | 161km 1hr 40mins | 182km 2hrs | 122km 1hr 30mins | 57km 40mins | 53km 40mins | — | 104km 1hr 5mins | 172km 1hr 55mins |
| Kojonup | 260km 3hrs | 197km 2hrs 15mins | 217km 2hrs 30mins | 267km 2hrs 45mins | 240km 2hrs 50mins | 153km 1hr 50mins | 117km 1hr 40mins | 145km 1hr 40mins | 184km 2hrs 10mins | 229km 2hrs 35mins | 157km 1hr 40mins | 155km 1hr 40mins | 104km 1hr 5mins | — | 248km 2hrs 40mins |
| Bremer Bay | 503km 5hrs 30mins | 431km 5hrs | 464km 5hrs | 478km 5hrs 15mins | 490km 5hrs 20mins | 408km 4hrs 25mins | 355km 3hrs 55mins | 331km 3hrs 30mins | 367km 4hrs | 299km 3hrs 20mins | 229km 3hrs 20mins | 181km 1hr 55mins | 248km 2hrs 40mins | 248km 2hrs 40mins | — |



CONTENTS

| | |
|---|----|
| WANJU (WELCOME) | 6 |
| SOUTH WEST ABORIGINAL SIX SEASONS | 7 |
| BUNBURY GEOGRAPHE | 8 |
| MARGARET RIVER REGION | 16 |
| SOUTHERN FORESTS & VALLEYS | 28 |
| GREAT SOUTHERN | 36 |
| 2025 EVENTS & FESTIVALS | 44 |
| ADVENTURE | 46 |
| CULTURE & HERITAGE | 52 |
| NATURE & WILDLIFE | 54 |
| WELLNESS | 60 |
| WINE, FOOD & PRODUCE | 62 |
| ACCOMMODATION | 66 |
| SUSTAINABILITY, INCLUSIVITY & ACCESSIBILITY | 68 |
| PET FRIENDLY | 70 |
| BEFORE YOU ARRIVE | 72 |
| START DREAMING | 74 |

ABOUT THIS BROCHURE

This brochure is produced annually by Australia's South West, a not-for-profit regional tourism organisation proudly supported by Tourism Western Australia. Australia's South West – including its agents, officers and contractors – has made every endeavour to ensure the details appearing in this publication are correct at the time of publishing, accepts no responsibility for any inaccuracy or misdescription whether by inclusion or omission, nor does the publisher accept any responsibility for subsequent change or withdrawal of prices, details or services shown, all of which are subject to alteration without notice.

 @australias_southwest

 @AustraliasSouthWest

 @australias_southwest

 @AustraliasSouthWest

 @australias_southwest

 @australiassouthwest

 Australia's South West



Scan this code with your smartphone by tapping the camera in the Spotify search bar.

**DON'T FORGET TO HASHTAG
YOUR SOUTH WEST GETAWAY!**
#AustraliasSouthWest

PHOTOGRAPHY CREDITS

The 2025 Holiday Planner has four different front covers with credit to Virat Shah (Wellington Dam), Daron Price (Margaret River Mouth), Frances Andrijich (Bald Head Trail), and SoCo Studios (Chestnut Brae Farm).

The photos inside this planner have been kindly provided by Aquabumps, Base Imagery, Ben and Ebony Photography, Bianca Turri, Daron Price, Dylan Dehaas, Elements, Emma Brown, Frances Andrijich, Heidi Mayes Photography, Jarred Seng, Kirby Spencer, Oisín Cooke, Osprey Creative, Salty Davenport, Sean Scott Photography, SoCo Studios, Tim Campbell, Tourism WA, Virat Shah, and Zoe Wheatley.

Published by: Vanguard Publishing
Printed by: Vanguard Print
Part of Vanguard Media Group
26 John Street, Northbridge WA 6003
Ph: 08 6323 1389
Advertising enquiries:
natalie@vanguardpublishing.com.au

DREAM DEEPER

In Australia's South West, it's not just about fleeting moments — it's about seeking deeper connections, discoveries and transformation.

Walk atop ancient forests of towering karri and jarrah trees where nature shares its age-old stories with a whisper. Hike rugged cliffs where oceans meet – a spectacle that takes your breath away. Pure forest air fuelling each step of your adventure.

With grapes caressed by ocean breezes yielding fine wines, a tale of enchantment within each sip. Relish in produce plucked from fertile soils, curated and paired in sensory feasts. Soak up moments of powerful stillness in ancient limestone caves.

Dive into crystal-clear oceans, lakes and rivers. Be at one with wild nature, with playful dolphins and graceful humpback whales, riding the perfect wave. Where off-track foraging through undergrowth gifts earth's treasures.

Beaches so vast, trails untouched, tracks unbeaten.

Where those who seek diverse and transformative experiences find them in abundance.

WANJU (WELCOME)

Australia's South West is a region abundant in nature, ancient culture, indulgence, adventure, exceptional produce and simple joys. Laid-back and effortlessly beautiful, a full-bodied richness lies beneath, so wildly perfect, with undiscovered charm waiting to be unearthed.

A sprawling ancient land, Australia's South West is home to one of the world's oldest continuing cultures, the Noongar Aboriginal people, whose connection to Boodja (Country) dates back more than 50,000 years.

Throughout this time, these traditional custodians and caretakers have watched over the native flora and fauna, as well as their culture's unique and rich stories, language, ceremonies, art, song, and dance. Possessing a deep connection to the land, waters, and communities, their tales and traditions have been passed down by elders for generations.

More than 23,000km make up the south west corner of Western Australia, with 1000 of those kilometres consisting of awe-inspiring coastline and salty sea air. One of just 36 biodiversity hotspots around the world, and boasting 24 National Parks, there's plenty of nature and wildlife to see. While rich soils and fertile lands unveil gourmet experiences around every bend.

Welcome to Australia's South West, where we dream of leaving the everyday far behind.

ACKNOWLEDGEMENT OF COUNTRY

We acknowledge the Traditional Custodians of the South West, the Noongar people, and their enduring connection to, and care for, Boodja. We recognise the Pinjarup, Willman, Wadandi, Pibelman, Kaneang, Menang, and Koreng Aboriginal communities, and invite visitors to respect and care for this ancient land and culture, contributing to its preservation for future generations.

Visitors are encouraged to learn about Country by immersing themselves in first-national culture up close. Experience the thrill of hearing a live didgeridoo performance, listen to Dreaming stories, taste bush-tucker, discover traditional bush medicine, or join a tour led by local tour guides who weave culture and history together. Just like the gentle breezes that blow off the pristine bays of the South West, we are asked to pass through Country without changing it.

SOUTH WEST ABORIGINAL SIX SEASONS

The first inhabitants of Australia's South West were the Noongar Aboriginal people, who have had a continuing connection to the land, waters and communities for more than 50,000 years. Conservationists by nature, they were semi-nomadic hunter gatherers who followed a six-season calendar, still used by Noongar people today. The six seasons - Birak, Bunuru, Djeran, Makuru, Djilba and Kambarang - represent the season changes we see across the South West annually.



BIRAK

December - January

Known as the season of fire and the young, Birak is very hot and dry and was known as the time to burn the scrub so as to encourage new shoots to grow. Expect warm days with soulful afternoon sea breezes bringing relief along the coastline. Long daylight hours make for perfect roadtrip conditions, while newborn wildlife scamper about from joeys to whales. And in the night time, there's nothing but an endless canopies of stars.



BUNURU

February - March

Long days and short nights signify the start of Bunuru, the hottest of the six seasons. This was traditionally - and continues to be - the best time to live and fish by the coast, rivers, and estuaries. Wispy coastal afternoons, the croak of frogs in creeks, and the sound of cicadas abound. Little rain falls, with hot easterly winds blowing across the land. Be on the lookout for the white flowers of the jarrah, marri and ghost gums.



DJERAN

April - May

Djeran is when the hot weather gives way to pleasant days, cooler nights, and dewy mornings. The leaves begin to fall, red and brown colours envelop the land, and the wind begins to swing southerly making it more intense and brisk. Grab your jacket for your hikes and smell the rain in the soil. During your ventures you'll find Ngari (salmon) swimming along the beaches and Banksia flowers beginning to bloom.



MAKURU

June - July

Makuru is the coldest season on the calendar, when the region is splashed with rainstorms and cloaked in long nights. As the waterways fill, grazing becomes easier for animals and hunting of Yongka (kangaroo), Wetj (emu), Kaarda (goanna), Koomal (possum), and Kwenda (bandicoot) begins. Hearty comfort food and red wine is on the menu throughout towns. Blue wildflowers emerge and the whales return to the coastline, headed northward on their great migration.



DJILBA

August - September

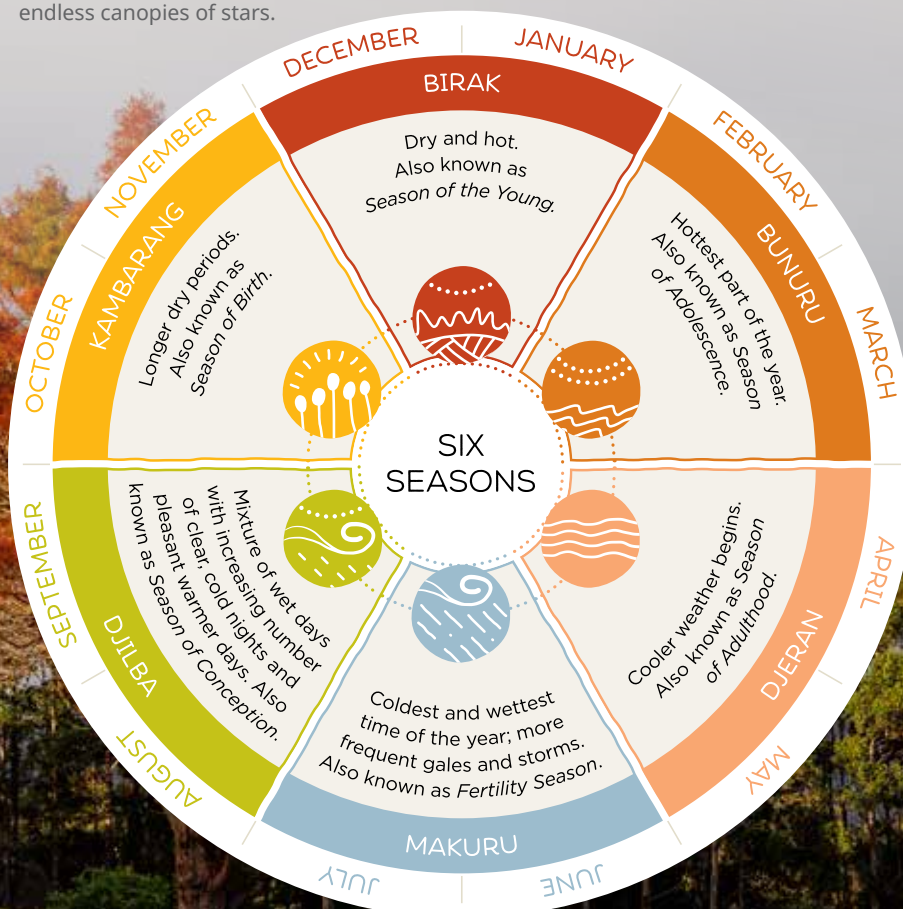
Djilba is all about transition. From the cold to the warm, from the wet to the dry, and from the old to the new. Cold and clear days combine with warmer windy conditions, the sound of whale song on the breeze. An explosion of yellow erupts as Acacias flower, and later in the season the stalks of the Balgas (grass trees) burst through. Right on the cusp of wildflower season, the fields, tracks, and hiking trails are awash with colour, making it the ideal time for bushwalking.



KAMBARANG

October - November

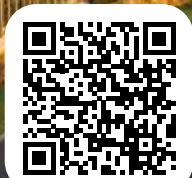
As the rain begins to subside, Kambarang welcomes longer and warmer days full of bountiful beauty. Kangaroo paws, orchids, and wattle paint the landscape like a canvas. The most striking display of all though comes from the Moodjar or Australian Christmas Tree. Bright orange-yellow flowers erupt like glowing orbs among the bush, signaling the real heat is on it's way. Snakes are abundant, returning after their winter brumation, as are young birds, marsupials and whales. It is the season of birth after all!



BUNBURY GEOGRAPHE

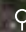
Dream of Indian Ocean sunsets that paint the sky purple and boutique wineries where the grapes grow kissed by morning mists. Ancient stories abound. Cruise alongside wild bottlenose dolphins, the sting of saltwater in the air. Zip along gravel mountain bike tracks, birds trailing sweet melodies behind you. Unearth vibrant bursts of colour on city walls, your very own treasure hunt. Natural phenomena shaped by billions of years at your feet. Culture at your fingertips. Spend less time travelling, and more time unwinding.

 @visitbunburygeographe |  @visitbunburygeographe



SCAN TO LEARN MORE

 | BUNBURY GEOGRAPHE

 BUNBURY LIGHTHOUSE

HARVEY REGION | KORIJEKUP

  @harveyregion

Nestled beneath enchanting rolling hills and beckoning you to experience the dreamscape that is dairy country. Recharge your body and soul, indulging in the region's renowned produce, from sweet sips of orange juice to heavenly bites of beef and cheese. Roll up a rug, grab your picnic hamper, and pack it full of farm-fresh treats to simply while-away the hours.

BUNBURY | GOOMBURUP

  @cityofbunbury

Bound by glistening blue waters that welcome the seabreeze each afternoon, and orange light come dusk. Drift in and out of cafes, restaurants and shops, journeying deep into the quiet backstreets in search of hidden art. Share shores with friendly bottlenose dolphins, and cocktails with friends from rooftop bars. Whether you're a wanderer passing through or relaxing on a long weekend getaway, there's something sublime waiting among the basalt rocks and sun-drenched sand dunes.

COLLIE

 @visitcollie  @visitcollierivervalley

Connect the stories of old with daring adventures of the new. Soar down mountain bike trails beneath towering timberlines of jarrah, stopping to gaze over picturesque dams and lakes. Wake to a warm brew and the whisperings of local wildlife at dawn, dip your toes in tranquil swimming holes, or listen as friendly locals delve into the region's historic tales. There's no such thing as 'just a mining town'.

DARDANUP & FERGUSON VALLEY

 @fergusonvalley

 @discoverfergusonvalley

Cross the train tracks and wind your way through the valley, as majestic rolling hills give way to rows of bountiful vines, quaint cellar doors, artisan galleries, and rustic craft breweries. Adventure along paths bounded by wildflowers or skirt mountain bike trails that take you deep into the heart of the forest. Don't forget to spot tiny creatures hidden among the tall-timber forests, mischievous gnomes lurking beside creeks and nestled in gum trees.

CAPEL

 @shireofcapel  @capelshire

Gently enveloped by 300-year-old giants, drive or hike the impressive Ludlow Tuart Forest toward an endless stretch of white sand and azure seas. Let the mellow Mediterranean climate infuse your senses as you taste local cheese, fruit, and wine. After a relaxed bite, slip into the cool waters or cast a line in the river, refreshment in hand.

DONNYBROOK

 @donnybrookwa

Jarrah and marri groves grow alongside winding rivers and lush orchards, the definition of a rural gem. Set the kids loose on the fun park, one of the largest in Australia. Settle back for a cider or take a stroll past roadside stalls and barns, burgeoning with the sweet scent of fresh fruit. Green as far as the eye can see, not just with envy.

BALINGUP

 @magicalbalingup

Stunning tapestries of rippling green hills. interspersed with charming stores, bristling with natural skincare products, locally handcrafted pottery, and eye-catching art. When Autumn descends, watch the sun paint the trees in rich warm hues, the landscape ablaze with colour. Mornings blanketed in mist, and evenings enveloped by stars, what more could you want.

TOP 5

THINGS TO DO IN THE BUNBURY GEOGRAPHE REGION

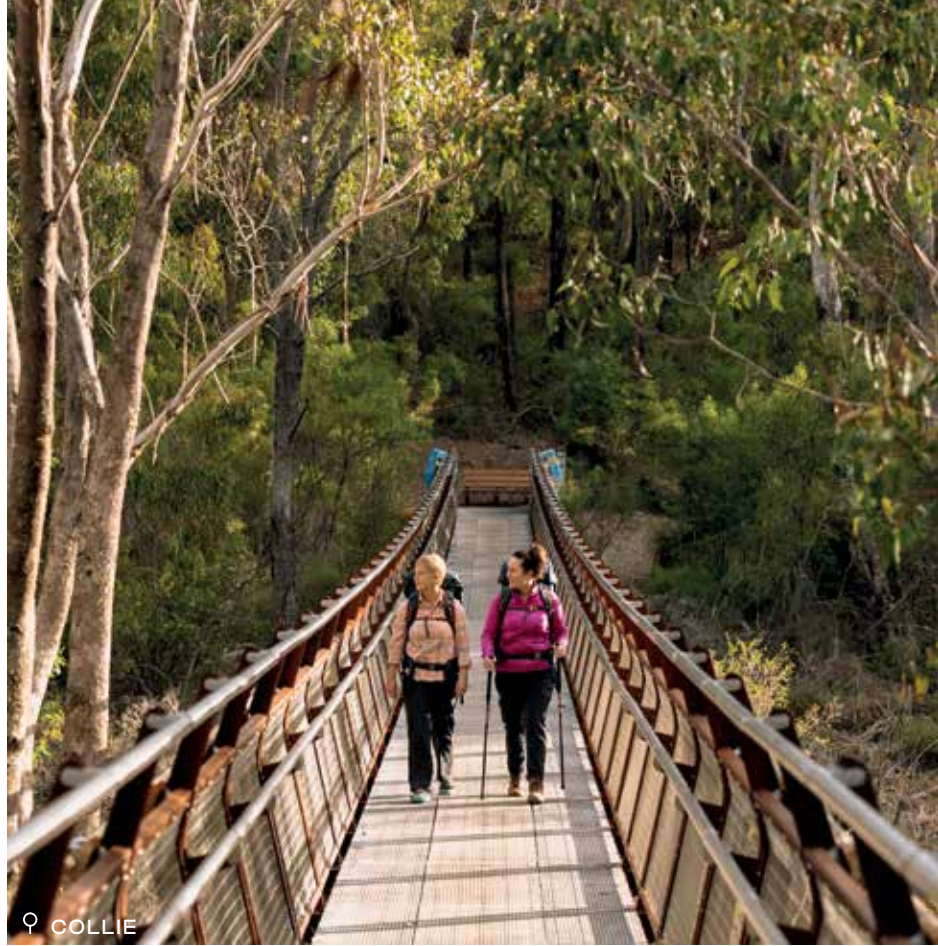
1 Take in the wonder of one of the most massive artworks around. The Wellington Dam mural, depicting the history of the town of Collie, can be seen from three angles - the road below, the viewing platform beside, and by walking across the top.

2 Make some new friends with a guided swim tour among the dolphins of Koombana Bay. See these stunning animals frolic in the shallows, and maybe even glimpse a calf.

3 Pack up the family and your four-legged pals, for a picnic like no other. Wind your way into Golden Valley Tree Park in Balingup, where 60 hectares of landscaped arboretum provide dozens of paths to stroll.

4 Unlock the ancient methods of weaving bulrushes and mixing traditional ochre paint. Hear about the world's oldest living culture on a Ngalang Wongi Aboriginal Cultural Tour in Bunbury.

5 Sip away your worries at the charming wineries within the Geographe Wine Region. From the dazzling grapes of the Ferguson Valley, to the ocean-caressed vines of Capel, there's a red, white, or sparkling for any taste or terroir.



♀ COLLIE



♀ DOLPHIN DISCOVERY CENTRE



♀ NGALANG WONGI ABORIGINAL CULTURAL TOURS



♀ WELLINGTON DAM



VISITOR SERVICING IN BUNBURY GEOGRAPHE

Balingup Visitor Centre

South Western Hwy, Balingup
Tel: (08) 9764 1818
balinguptourism.com.au

Bunbury Visitor Centre

Bunbury Museum & Heritage Centre,
1 Arthur St, Bunbury
Tel: 1800 286 287
visitbunburygeographe.com.au

Collie River Valley Visitor Centre

156 Throssell St, Collie
Tel: (08) 9734 2051
collierivervalley.com.au

Donnybrook Visitor Centre

Old Railway Station,
South Western Hwy, Donnybrook
Tel: (08) 9731 1720
donnybrookwa.com.au

Ferguson Valley Visitor Centre

5 Ferguson Rd, Dardanup
Tel: (08) 9728 1551
fergusonvalley.net.au



♀ WILLOW BRIDGE



♀ GOLDEN VALLEY
TREE PARK

WE ARE HIT THE ROAD ADVENTURES...



HARVEYREGION.COM.AU



HARVEY
River
ESTATE
GEOGRAPHE - WESTERN AUSTRALIA

CELLAR DOOR & CLIMB THE BIG ORANGE

183 Third Street, Harvey, WA 6220 | 10am - 3pm

PHONE: (08) 9729 2588

WEB: harveyriverestate.com.au



GEOVINO

**A WINE BAR AND BOTTLE SHOP, FOR THE
NEIGHBOURHOOD BY THE NEIGHBOURHOOD**

83 Uduc Road, HARVEY, WA 6220

PHONE: (08) 9729 1275

OPENING HOURS:

Mon to Fri 10am - 6pm | Fri 10am - 8pm | Sat 10am - 4pm



**BUNBURY
GEOGRAPHE**

Close to Home, Far from Expected

visitbunburygeographe.com.au



We invite you to dive into the Bunbury Geographe Region.
Scan the QR code or visit our website to start exploring.





Need to escape the rat race?
Lake Brockman Tourist Park is a world
away, right on your back doorstep.

Nestled in the state forest and overlooking the fresh blue waters of Logue Brook Dam, we are only an hour and a half south-west of Perth (off South-West Highway, just before Harvey).
From family glamping tents and cabins to couples glamping (with a view) plus our spacious powered and unpowered sites, we can cater for any camping set up.
Every camp has its own fire pit (during the winter months) where you can relax and unwind under the stars and roast your marshmallows around the campfire while creating magical memories with family & friends. Our campsites are also pet friendly.
Our cafe is open 7 days for great coffee, breakfast, lunch and light snacks.
Book your next camping getaway at Lake Brockman Tourist Park or Logue Brook Campground online today or call our friendly staff on (08) 9733 5402.
Email: lakebrockman@gmail.com lakebrockman.com.au

G'DAY
PARKS



Evedon Lakeside Retreat

Lakeside Cabins/Apartments — Weddings — Café / Restaurant — Kayaking — Bushwalks — Fishing



Our cosy cabins and spacious two-storey apartments are nestled in a spectacular jarrah forest on the banks of stunning Evedon Lake. Watch the sunset over the lake, enjoy your cosy log fire (seasonal), fish, kayak or take a walk along the estate's many forest trails.

Cook up a gourmet feast in your kitchen or enjoy a meal in our cafe restaurant.

Superbly located in the Ferguson Valley, nearby to Honeymoon Pool, MTB trails, just 20 minutes from Bunbury's beaches and just two hours from Perth, Evedon Lakeside Retreat is perfect for a family holiday or romantic getaway. See website for cafe restaurant opening hours and live music- bookings essential.

205 Lennard Rd, Burekup | T: 9726 3012 | E: info@evedon.com.au | www.evedon.com.au

The South West's best
WINERY
& **BREWERY**
tour experience!



goodvibesswtours.com.au



VANGUARD
PUBLISHING

For advertising enquiries, contact
Vanguard Publishing today.
natalie@vanguardpublishing.com.au
0426 752 352

Holiday in WA

When you holiday in WA, book with Sustainable
Tourism Accredited Businesses and you'll get a quality
assured operator wherever you go.

From hotels and guided tours to shops and services, you
can expect quality, reliability and great customer service.

To book your holiday with Sustainable
Tourism Accredited Businesses, visit
www.holidayinwa.com.au



Holiday in the South West

at RAC's holiday Parks and Resorts

There's always something new to experience in the South West and whether you're discovering new beaches, tasting your way through the Margaret River food and wine region or relaxing amongst nature, our parks and resorts offer the perfect base for every kind of holiday.

Book your South West adventure now.

RAC
members
enjoy
exclusive
rates

Call 1800 871 570 or visit
racparksandresorts.com.au

Terms and conditions apply. RAC member discount not applicable on already discounted rates. Discounts available on direct bookings only made online or via phone. For more information visit our website.



For the better

MARGARET RIVER REGION

Feel the intangible magic in each breeze that drifts off the sparkling Indian Ocean. Hear it in the waves, where world champion surfers got their start and dolphins dive. Immerse yourself in it among whispered sounds of an ancient culture – one of the oldest on the planet. Learn the deep connection of the Wadandi people to the land they've called home for 50,000 years. Taste it in indulgent produce and plump grapes that ribbon green hills. Chase the endless horizon where forests give way to wellness, waves, and caves. A little slice of paradise. No, you're not dreaming.



f @margaretriverwineregion | @margaretriver



SCAN TO LEARN MORE

BUSSELTON | UNDALUP

From nautical-themed parks splashed across the foreshore to trendy restaurants, bars and breweries, Busselton is a proverbial playground for the young and old. Enjoy fish and chips on soft sandy beaches before hopping the train to the end of the Southern Hemisphere's longest wood-piled jetty. Explore the coastline's sunken surrounds at the Underwater Observatory, sneaking glimpses of shy seahorses around the artificial reef. Admire Geographe Bay's luminous waters up close with a spot of snorkelling, scuba diving, windsurfing, kayaking, or sailing, as the sun sets each afternoon in a new shade of gold.

DUNSBOROUGH | QUEDJINUP

Step into an ethereal world of white sandy coves and wildflower-dotted national parks. Shining turquoise waters contrast against ancient granite and limestone ridges. Take a drive to the lighthouses and lookouts for a chance to see the awe-inspiring migration of whales come spring. In town, homely stores overflow with handmade gifts, cafes, bakeries, burger bars, and alfresco dining at your fingertips. Conquer soul and self on the epic Cape to Cape Track, a 124km coastal trail from Cape Naturaliste Lighthouse to Cape Leeuwin Lighthouse. With the wind in your hair and

sun warming your skin, you'll alternate between sweeping cliff tops, stony paths, and long secluded beaches, with nightly ocean sunsets that will take your breath away.

YALLINGUP

Sun-kissed sands and big swells are at the heart of this cosy coastal hamlet, known for its dramatic shorelines and world-class waves. Sea spray crashes over jagged rocks by some of the world's best surf breaks, while sheltered bays award intrepid explorers the chance to spot sealife in crystal-clear rock pools. Grab a board and plunge in at Three Bears, Smith's Beach, Rabbits, Yallingup, or Indijup breaks. Venture inland and you'll understand why the Indigenous Noongar people refer to Yallingup as the 'place of caves'. Ancient stories lie beneath the brush, calling thrill-seekers to descend into the dark. Embrace magic come sunset, as you bask in dreamy pastel skies and golden waters.

COWARAMUP

Sumptuous fresh produce and sugary treats to satiate any sweet craving. Wander streets dotted with life-size fibreglass cows, soaking in the old-world wonder of country life. Historic railways, organic wineries, handcrafted gifts, decadent fudge. Serenity comes when you slow down once in a while.

MARGARET RIVER | WOODITJBILYUP

Ornate caves, luminous forests, and thundering surf breaks collide with culinary experiences and tantalising wines to form alchemy. Listen to waves crash against rugged reefs, sip masterful wines from almost 100 cellar doors, and feel the dappled light of beautiful Boranup. Skilled pros or grommets getting their sea legs will find dream-worthy conditions at more than 40 breaks, while hikers savouring seclusion will find it along untouched paths. Afternoons are for sampling gourmet food, rustic brews, or just a well-deserved nap in the soft light.

AUGUSTA | TALLINUP

Bounded by the Blackwood River and kissed by sparkling Indian and Southern Ocean waters. Charm rounds every bend, as the dreams of aquatic enthusiasts come to life. Perched on the most south-westerly tip, historical Cape Leeuwin lighthouse shines across the sea, while north, the winding waterways take you deep into adventure on the backs of kayaks and canoes. Migrating humpbacks and southern right whales gather, stingrays glide in the shallows, and every cove is the perfect one for landing the freshest dinner.



TOP 5

THINGS TO DO IN THE MARGARET RIVER REGION

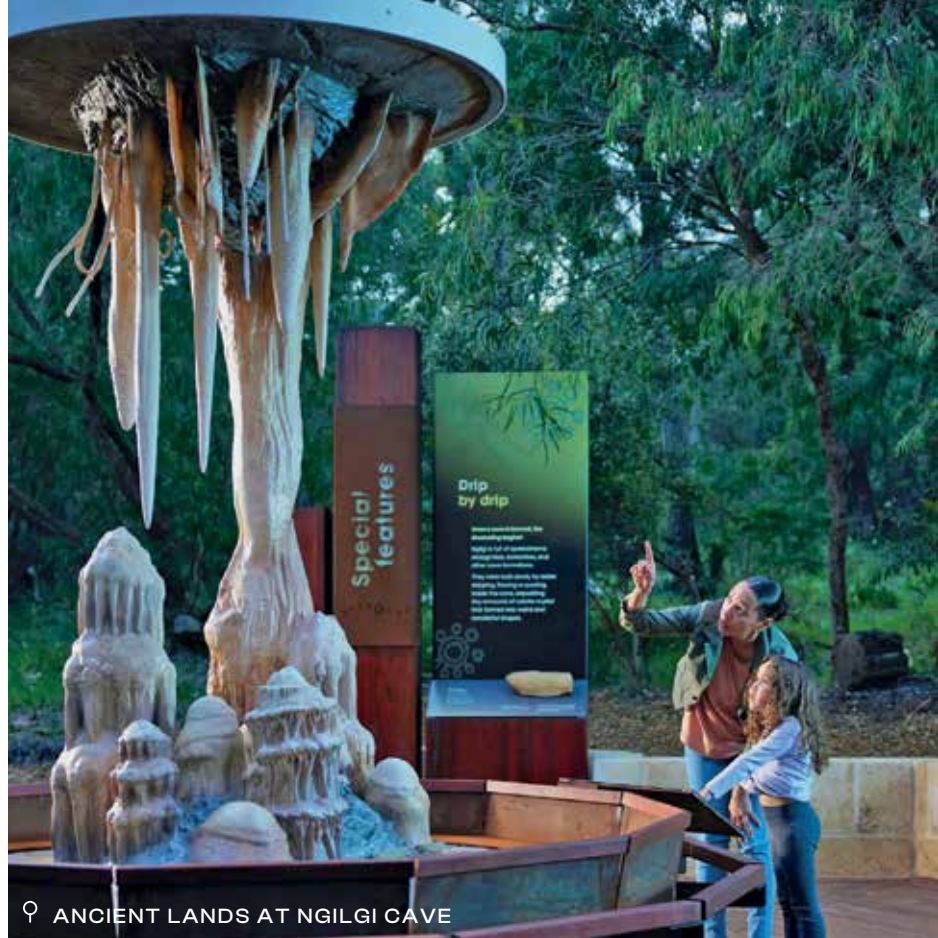
1 Glimpse some of the ocean's rarest and most spectacular wildlife up close on a whale watching tour from Augusta or Busselton. Seasick? Head to Sugarloaf Rock, Cape Naturaliste Lighthouse, or Point Picquet instead to glimpse them from land. Or stop by Hamelin Bay to say hello to the stingrays in the shallows.

2 Climb the tallest lighthouse on mainland Australia to its dizzying 39-metre height, casting your gaze out over the intersection of the Southern and Indian Ocean, at Cape Leeuwin Lighthouse.

3 Descend into the eerie quiet and explore the region's ancient and indigenous history at one of four magnificent limestone caves - Jewel, Lake, Mammoth, or Ngilgi. Or go on a cultural tour with Josh from Koomal Dreaming.

4 Dappled sunlight, quiet seclusion, birdsong and the scent of eucalyptus. Nature's gifts as you wander the world-class Boranup Forest. A new-growth grove that is backed by exquisite wineries on one side and remote beach on the other.

5 Head to the sunken depths of one of only 6 underwater observatories in the world at Busselton Jetty, catching a glimpse of colourful corals, sponges, fish, seals, and even mermaids. Take the vibrant train the 1.8km journey out, or just enjoy the gentle half-hour stroll surrounded by turquoise blues.



♀ ANCIENT LANDS AT NGILGI CAVE



♀ NATURALISTE CHARTERS



♀ MARGARET RIVER MOUTH



♀ UNDERWATER OBSERVATORY, BUSSELTON JETTY



♀ CAPE LEEUWIN LIGHTHOUSE

DID YOU KNOW?

Margaret River is closer than you think, with direct flights from Melbourne and Sydney to Busselton-Margaret River Airport operating with Jetstar Australia.



♀ BORANUP FOREST



VISITOR SERVICING IN THE MARGARET RIVER REGION

Busselton Visitor Centre

17 Foreshore Parade,
Busselton Foreshore
Tel: (08) 9780 5911

Margaret River Visitor Centre

100 Bussell Highway,
Margaret River
Tel: (08) 9780 5911
margaretriver.com



RAC
members
enjoy
exclusive
rates

A nature escape for all types of travellers

- » Self contained cabins
- » Modern safari tents and dorm rooms
- » Powered and unpowered caravan and camp sites
- » Nature playground, camp kitchen, laundry



**Margaret River
Nature Park**
For the better

Call 08 9758 8227 or visit racparksandresorts.com.au



RAC
members
enjoy
exclusive
rates

The ultimate family holiday location

- » Self contained cabins and motel-style rooms
- » Powered and unpowered sites
- » Swimming pools, camp kitchen, BBQs and laundry
- » Mini golf, BMX track, recreation room



**Busselton
Holiday Park**
For the better

Call 08 9755 4241 or visit racparksandresorts.com.au

**Your home away from home
in Australia's South West**

Private holiday homes
in Dunsborough, Eagle Bay
and Rural Yallingup.

- Short or long getaways
- Coastal and Rural Retreats
- Elegant Apartments & Villas
- Beach Houses

Ph: +61 8 9756 8280
E: stay@capeexec.com.au
capeexec.com.au

**CAVES HOUSE
HOTEL
YALLINGUP**

HOTEL | BAR
RESTAURANT | LIVE MUSIC
WEDDINGS | EVENTS

18 YALLINGUP BEACH ROAD
Ph: +61 8 9750 1888
WWW.CAVESHOUSEHOTELYALLINGUP.COM.AU

• Situated on the pristine waters of Geographe Bay

• 2 & 3 bedroom resort family-style cottages
including adults only beachfront cottages

Ph: 08 9756 8885
info@dunsboroughbeachcottages.com.au
dunsboroughbeachcottages.com.au

**OFF THE
BEATEN
TRACK**

Western Australia's
Premium Hiking
Experiences & Adventure Tours
offthebeatentrackwa.com.au

FOREST RISE
Chalets & Lodge
your private escape

MARGARET RIVER WINE REGION

**SURROUND YOURSELF
WITH NATURE**

You will have the ultimate privacy on
our unique 240-acre private estate.
Relax your mind, recharge your soul, enjoy a
private massage and yoga session during your stay.

Surround yourself with nature and the soothing
sounds of our abundant birdlife. Find balance in
your busy life by booking your next escape with
our friendly, experienced team who will ensure
you leave feeling refreshed and renewed.

Forest Rise is nestled in the heart
of the Margaret River Wine Region.
Surrounded by the finest wineries,
restaurants and only a short drive to
stunning beaches along our coastline.

REST | RELAX | RECONNECT

231 YELVERTON ROAD,
YELVERTON WA 6280
Ph: (08) 9755 7110
E: relax@forestrise.com.au
W: forestrise.com.au



Mandalay
HOLIDAY RESORT & TOURIST PARK

Phone: (08) 97521328
www.mandalayresort.com.au

Escape to Mandalay and enjoy our pools, giant waterslide and shaded poolside deck

Relax in our luxury 2 storey villas, 2 and 3 bedroom chalets, beach cottages, cabins, glamping tents, powered caravan and ensuite sites. Giant waterslide

- 3 pools • Games room • 4 playgrounds
- Jump Pad • Free Wifi

...memories are made at Mandalay!

OPPOSITE THE SPARKLING SHORES OF GEOGRAPHE BAY BUSSELTON



TREE CHALETs

SIMPLE LUXURY IN NATURE

ADULT ONLY LUXURY CHALETs
ROMANTIC | PEACEFUL | RELAXING | CLOSE TO NATURE
15 MINUTES DRIVE FROM BUSSELTON

TREECHALETs.COM.AU @TREE_CHALETs



EN-ROUTE
ALONG THE EDGE

THE SOUTH WEST EDGE

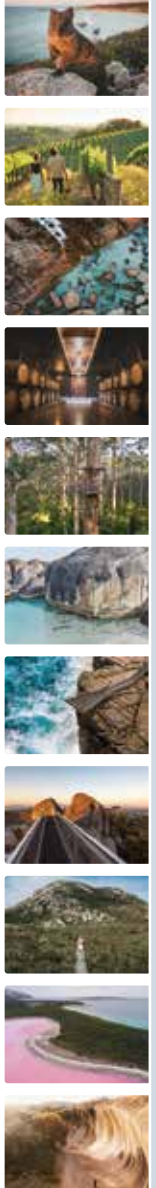
12 DAYS | YEAR-ROUND



SCAN HERE AND
START PLANNING
YOUR SOUTH WEST
EDGE ROAD TRIP

WWW.THESOUTHWESTEDGE.COM.AU

- DAY 1
ROTHNEST ISLAND
& FREMANTLE
- DAY 2
FREMANTLE
TO BUNBURY
- DAY 3
BUNBURY
TO YALLINGUP
- DAY 4
YALLINGUP
TO MARGARET RIVER
- DAY 5
MARGARET RIVER
TO PEMBERTON
- DAY 6
PEMBERTON
TO DENMARK
- DAY 7
DENMARK
TO ALBANY
- DAY 8
ALBANY
TO HOPETOUN
- DAY 9
HOPETOUN
TO ESPERANCE
- DAY 10
ESPERANCE
- DAY 11-12
ESPERANCE
TO PERTH

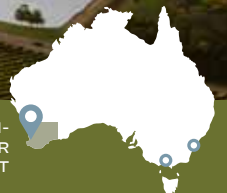


FLY DIRECT TO
AUSTRALIA'S
**SOUTH
WEST** DREAM
DEEPER

MELBOURNE & SYDNEY DIRECT TO
THE MARGARET RIVER REGION

BOOK YOUR FLIGHTS NOW AT JETSTAR.COM

BUSSELTON-
MARGARET RIVER
AIRPORT



STAYS THAT WILL STAY WITH YOU

Stay in the experience - premium, off-grid cabins located in truly unique locations in Australia's South West. Book today.

PROUDLY PART OF
**THE DREAM
COLLECTIVE**
WESTERN AUSTRALIA



HEYSCAPE
TINY CABINS

MEMBER OF **ALL**
THE LIMITLESS LOYALTY PROGRAMME

MARGARET RIVER'S PREMIER BEACHSIDE DESTINATION
CONNECT WITH THOSE WHO MATTER MOST

BUNKER BAY ROAD, CAPE
NATURALISTE WA 08 9756 9100 |
ALL.COM

 **PULLMAN**
HOTELS AND RESORTS



GRALYN

ESTATE
MARGARET RIVER
— EST. 1975 —



Crafting premium wine on our family vineyard since 1975.

Gralyn Estate have been quiet pioneers of aged port styles for over forty years, alongside highly regarded expressions of regional cornerstones, Chardonnay and Cabernet Sauvignon.

Open Daily
10.30am-4.30pm
Tastings and Sales

4145 Caves Road,
Wilyabrup

gralyn.com.au  

CAPE MENTELLE
MARGARET RIVER

WINERY BY DAY
OUTDOOR CINEMA BY NIGHT
DECEMBER - JANUARY



Book online
CAPEMENTELLE.COM.AU

Swings & Roundabouts

VISIT US IN TOWN OR AT THE VINEYARD

SWINGS & ROUNDABOUTS VINEYARD



2807 Caves Road, Yallingup
Follow @swingsyallingup
T: 08 9756 6735
www.swings.com.au

SWINGS & ROUNDABOUTS TOWN



85 Bussell Hwy, Margaret River
Follow @swingsmargaretriver
T: 08 9758 7155
www.swings.com.au

DRINK
AWARD WINNING
WINES
EAT
WOOD FIRED PIZZA
& FULL MENU

FISHBONE
MARGARET RIVER



Fishbone Wines is a boutique winery & restaurant located in Wilyabrup, Margaret River. We strive to produce wines which reflect the character, diversity & natural beauty of the region.

 422 Harmans Mill Rd, Wilyabrup WA 6280 - 10am - 4.30pm
Restaurant bookings recommended

 (08) 9755 6726  fishbonewines.com.au   

Good beer, good food & good times.

Beerfarm - it's more than a Brewery, but a destination for beer, quality local produce and good times.

25MINS SOUTH OF BUSSELTON | OPEN 7 DAYS

beerfarm.com

BEERFARM

Blue Manna
bistro



Fresh locally
caught seafood

1/16 CYRILLEAN WAY, DUNSBOROUGH - 08 9786 5051 - WWW.BLUEMANNABISTRO.COM.AU



WILD HOP
BREWING COMPANY
WILDWOOD RD, YALLINGUP, WESTERN AUSTRALIA

OPEN 7 DAYS
FAMILY FRIENDLY // DOG FRIENDLY // NATURE BASED PLAYGROUND
FAMILY-STYLE WOODFIRED SHARE MENU
BEERS BREWED ON SITE // LOCAL WINES + SPIRITS // HOPPY HOUR: WEEKDAYS 3.30 - 4.30PM
1301 Wildwood Road, Yallingup // wildhopbeer.com.au // @wildhopbeer



Ninjas in the Mocean
PLAY CENTRE & CAFE
MARGARET RIVER

3/40 Station Rd,
Margaret River
08 9757 9075
ninjasinmocean.com.au

Suitable for
kids aged
1 to 12 years




South West
ECO DISCOVERIES

See, Taste, Discover the Margaret River Region
Coastal & Wildlife Eco Tour • Wine & Sights Discovery Tour
Nocturnal Wildlife Encounter • Private tours on request
E: info@southwestecodiscoveries.com.au
Ph: 0477 049 722 •  South West Eco Discoveries
SouthWestEcoDiscoveries.com.au




SCENIC
HELICOPTERS



From indulgent helicopter winery tours to magical sunset flights, romantic beach picnics to rugged helifishing adventures, we have something highly memorable for everyone!



With bases in Margaret River, Albany and Coral Bay, we also offer luxury multi-day touring experiences along the entire Western Australian coastline.



Simply the best way to see WA — look us up on your next big adventure!

jackson@scenichelicopters.com.au
scenichelicopters.com.au
0499 SCENIC (0499 723 642)





WEBSITE



**MARGARET RIVER MAZE
GIANT HEDGE MAZE
18 HOLE MINI GOLF
5 HECTARES OF GARDENS
& CAFÉ**



- More mazes, games and puzzles amongst the gardens
- Unusual WA native plants, attracting abundant birds and wildlife
- BBQs, picnic ground, playground

- Amaze'n Café overlooking the gardens and lake for light meals
- Wheelchair accessible paths
- 4km south of Margaret River

9978 Bussell Hwy, Margaret River | amazonmargaretriver.com.au | 08 9758 7439

Our Sea of Discovery Yours to Explore!

BOOK NOW!

VISIT THE OBSERVATORY | RIDE THE JETTY TRAIN | DIVE THE SCULPTURES

WALK THE 1.841KM JETTY | EXPLORE THE MARINE DISCOVERY CENTRE

www.busseltonjetty.com.au | 08 9754 0900



EXPERIENCE THE EXTRAORDINARY

Venture into ancient caves,
ascend historic lighthouses,
soar through forest treetops,
and meet majestic raptors –
experience the South West
with the Capes Foundation.

BOOK ONLINE AT

CAPESFOUNDATION.ORG.AU





Image Credit Frances Andrijich

CARAVAN & CAMPING

WESTERN AUSTRALIA

Discover Wonder & Warmth Out West



Scan to explore caravan & camping shows, download the ultimate guide to planning your adventure and so much more!

caravanwa.com.au | [@caravanandcampingwa](https://www.instagram.com/caravanandcampingwa)

**Get your hands
on the best 4WD
magazine out there!**



Subscribe today for only \$42
(Four issues per year delivered to your mailbox)

western4wdriver.com.au

All Sea
CHARTERS

Step onboard Whale Song, the only purpose built Whale Watching Vessel in WA, with full safe walkaround on both levels, large boat but never more than 47 onboard to ensure all get a front row view

BUSSELTON
DUNSBOROUGH
AUGUSTA

BOOK NOW
 0417 794 008
 www.whalewatchingcharters.com.au

To advertise in the next
Australia's South West
holiday planner contact
Vanguard Publishing today.

natalie@vanguardpublishing.com.au
0426 752 352

**VANGUARD
PUBLISHING**

CAPE LODGE

Located in Yallingup offering luxury accommodation in the Margaret River wine region, Cape Lodge has 22 rooms and a magnificent 3-bedroom residence.

Surrounded by its own vineyard, the lodge sits on 40 acres and is home to the Cape Lodge Restaurant, one of the great dining rooms in Western Australia.



3341 Caves Rd, Yallingup +61 8 9755 6311
 stay@capelodge.com.au capelodge.com.au

SOUTHERN FORESTS AND VALLEYS

Step into an ethereal ancient kingdom of pure forest air. Soaring karri, jarrah, marri, and tingle trees guardians from above. Nature's wonders abound, rivers carving their way through otherworldly landscapes, emptying into tranquil inlets and streams. Misty valleys up ahead, winding roads behind. Tracks begging to be taken. Enchanting edible delicacies made for devouring, alongside sensual drops of award-winning wines, perfect for the pairing. Undiscovered charm just waiting to be discovered.

f @southernforests&valleys

@southernforestsandvalleys



SCAN TO LEARN MORE

BOYUP BROOK

Where the twang of guitar strings reverberates through street and soul. Local hospitality mixes with quaint shops and a treasure trove of quirky collectables. Wander ironstone streets, the scent of wildflowers ever on the breeze. Tune in to whispered tales of an agricultural heartland or just spend ethereal nights stargazing. It's the perfect place for a bit of peace.

GREENBUSHES

Picturesque hills painted in emerald shades, and natural waterholes soaked in the scent of Eucalyptus. History seeps from soil once prospected for tin, tantalum, and lithium, the marks still present in a 265m deep pit boasting unparalleled views. Then, as spring rolls around, hiking boots and a wanderer's spirit bring the promise of spectacular wildflowers along every trail.

NANNUP

Where rivers and roads meet. Rest, relax, and rejuvenate, tasting award-winning cheese, wine, honey, and olives fresh from the farm. Brace for breath-taking beauty each August as the town's famous tulips erupt into colour. Or let time slip away on a tranquil walk, ride, or drive past hushed forests and bubbling creeks. Mountain bike at the ready, each trail is a step into the unknown. So hop on, kick up some dirt, and start exploring.

BRIDGETOWN

Soft morning sunlight breaks through fog-layered timberlines, the call of birds a gentle alarm clock reminding you of the promise of the day. Each season here offers its own enchanting gifts, with misty winter mornings, breezy summer nights, blazes of fiery colour come autumn, and vibrant blossoms in the spring. Stroll through cottage gardens dripping in colour and along the banks of the burgeoning Blackwood River, charm present in every footprint.

MANJIMUP

Lofty karri forests rub shoulders with rich fertile farmlands, delivering freshness in every bite. Avocados, cherries, chestnuts, nectarines, finger lime, and acclaimed crunchy apple varieties are all starters to the main event... the rare Périgord black truffle. Artisanal wines among towering trees, refreshing dips in National Park pools or catching your own prize in shimmering waters brimming with rainbow trout and marron. Magic abounds.

PEMBERTON

📍 @pembertonvisitorcentre.australia

📍 @pemberton_australia

Time-worn forests, tumbling waterfalls, hidden lakes, and sand dune systems slowly swallowing up the landscape. Enjoy a laidback afternoon strolling the pines or soaking in the moss-green surrounds of inland pools. Head onwards to quaint streetscapes, a yester-year town untouched from settlement days. Give in to culinary cravings with scrumptious farm gate produce and enjoy a tippie of magnificent drops from world-class wineries. Into the woods we go.

NORTHCLIFFE

A thriving botanical wonderland, bursting with a bounty of rare flora and fauna. On the horizon, a granite monolith swims amid a sea of karri and marri trees, offering views from forest to coastline. A stone's throw from town, wander the intersection of art and nature, discovering what it's like to be a kid again. Encircled by National Parks - Warren, Shannon, and D'Entrecasteaux - the area erupts with unique colours come wildflower season. Pedal through their soaring trees on mountain bike, chasing a glimpse of migrating whales from the clifftops.

WALPOLE

Unspoilt landscapes. Ancient stories. Unparalleled seclusion. Where white sandy beaches meld into the wild waves of the Southern Ocean, ideal for a spot of swimming, sailing, or surfing. On land, horse-riding and 4WDing breathe life into long-forgotten cowboy dreams. Mystical moments await in every sunset over the silver inlet, and every dappled dawn that cascades over the waterfalls. Dominated by sky-top walks among red-tingle trees, the sweet scent of native forests, and the call of wildlife, magnificent doesn't quite cover it here.

TOP 5

THINGS TO DO IN THE SOUTHERN FORESTS & VALLEYS

1 Strike gold on a hunt for the elusive Périgord Black truffle. Delicacies devoured the world over, these earthen treasures lurk in the abundant soils of Manjimup, and are celebrated gems during winter.

2 Dive into the depths of the serene Pemberton Pool. Expect picture perfect views in every shade of green.

3 Retreat among nature and live the country life on a cosy farmstay. From nights under the stars to breakfasts with miniature ponies, rabbits, and chickens. There's no chance you won't leave with a smile on your face.

4 Experience the serenity of the forests, smell wildflowers, spot wildlife, and cruise over the smooth waters of the Blackwood River on a canoe or kayak adventure in Bridgetown.

5 Explore the old-growth forests from a new perspective, with a tree-top walk near Walpole. Or search for quokkas (of a crocheted kind) in Northcliffe.



♀ CHESTNUT BRAE



♀ TRUFFLES, MANJIMUP



♀ PEMBERTON POOL



♀ VALLEY OF THE GIANTS TREETOP WALK



♀ BLACKWOOD RIVER, BRIDGETOWN



VISITOR SERVICING IN THE SOUTHERN FORESTS AND VALLEYS

Boyup Brook Visitor Centre

Cnr Bridge Street & Abel Street,
Boyup Brook
Tel: (08) 9765 1444
boyupbrooktourism.com.au

Bridgetown-Greenbushes Visitor Centre

11 Stewart Street, Bridgetown
Tel: (08) 9761 1740
bridgetown.wa.gov.au/explore

Manjimup Visitor Centre

151 Giblett Street, Manjimup
Tel: (08) 9771 1831
manjimupwa.com

Northcliffe Visitor Centre

Muirillup Road, Northcliffe
Tel: (08) 9776 7203
visitnorthcliffewa.com.au

Pemberton Visitor Centre

Brockman Street, Pemberton
Tel: (08) 9776 1133
pembertonvisitor.com.au

Walpole-Nornalup Visitor Centre

South Coast Highway, Walpole
Tel: (08) 9840 1111
walpole.com.au




RAC members enjoy exclusive rates

A tranquil setting amongst the karri trees


- » Self contained wood cabins with lake or forest views and fireplace
- » Hotel-style rooms
- » Powered and unpowered caravan & camping sites
- » State of the art camp kitchen and laundry
- » Lakeside restaurant and resort activities

Call 08 9776 2020 or visit racparksandresorts.com.au

HOUSEBOAT HOLIDAYS Walpole

Delight in the breathtaking beauty of the Normalup and Walpole Inlets from the comfort and privacy of your own superbly appointed Houseboat.



PO Box 112,
Walpole WA 6398
Tel (08) 9840 1310
Email: houseboatswa@westnet.com.au
Web: www.houseboatholiday.com.au

PEMBERTON DISCOVERY TOURS



The ultimate way to experience the breathtaking beauty of Pemberton, Western Australia on this guided offroad eco adventure visiting the Yeagarup Dunes.






AWARD WINNING GUIDES | 4WD ECO & WINE TOURS | SUPPORT ON THE BIBBULMUN | CATERING FOR ALL ACCESSIBLE

+61 427 133 335
www.pembertondiscoverytours.com.au



northcliffe HOLIDAY PARK

Drive through powered sites
Bus bays | Onsite vans | Camp kitchen
Gas BBQs | Dog friendly

190 Muirillup Rd, Northcliffe | 08 9776 7276
northcliffeholidaypark.com.au

"Amazing place... Huge adrenaline rush!"





AERIALADVENTUREPEMBERTON.COM.AU

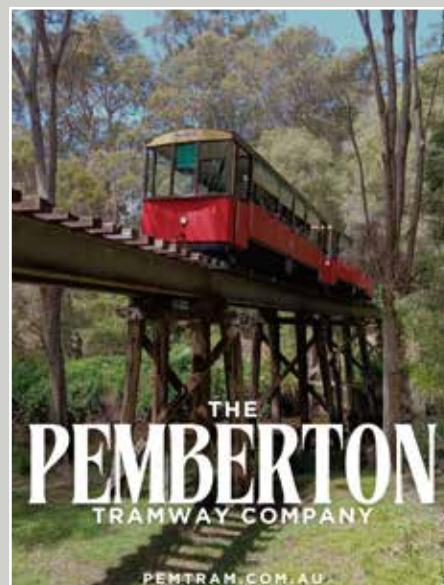


Bringing WA closer

Discover the South West with Transwa. Call us on **1300 662 205** to find out where we can take you!

Visit transwa.wa.gov.au to plan your next journey.





THE PEMBERTON TRAMWAY COMPANY

PEMTRAM.COM.AU



EXPERIENCE ALL THAT NANNUP HAS TO OFFER!

From unique events to the ultimate in nature, it's time you experienced Nannup. Have everything you need at your fingertips and start exploring with the Experience Nannup app. Download it today!



**DOWNLOAD
FREE TODAY**



AUSTRALIA'S LEADING ART IN NATURE EXPERIENCE



A nationally unique treasure hunt with something for everyone



OPEN DAILY - NORTHCLIFFE
(08) 9776 7203
www.understory.au



1.2KM FOREST ART TRAIL - SCULPTURE GARDEN - CAFE - GALLERY - RENOWNED ARTISTS



Discover the magic of the Southern Forests!

Whether you're seeking adventure, relaxation, or a taste of the finest local produce and wines, the Southern Forests has it all.

Here's a sneak peek of what awaits you:

Nature's Wonders: Marvel at King Jarrah, 4 Aces, and Glenoran Pool. Dive into history at the picturesque Fonty's Pool, perfect for a summer picnic and swim.

Thrilling Adventures: Climb the Fire Lookout trees in Pemberton for breathtaking views. Ride the exhilarating tracks at Pemberton Mountain Bike Park, Giants Trails Mountain Bike Tracks (opening early 2025) or explore the scenic Munda Biddi Trail.

Scenic Trails: Wander along the Bibbulmun Track, visit the stunning Cascades in Gloucester National Park, and Beedelup Falls.

Art and Culture: Stroll through the Understory Art & Nature Trail and Painted Tree Gallery. Step back in time at the Northcliffe and Pemberton Museums.

Breathtaking Views: Scale Mount Chudalup for panoramic vistas. Unwind at Windy Harbour and explore D'Entrecasteaux National Park.

Unique Experiences: Walk among giants at the Walpole Valley Tree Top Walk and Ancient Empire Walk. Kayak or cruise the serene Walpole Nornalup Inlet.

Spectacular Lookouts: Don't miss Mount Frankland Lookout, Fernhook Falls, and Hilltop Lookout.

Images: Frances Andrijich



**SOUTHERN
FORESTS & VALLEYS**

"a world away from the everyday"

Visit southernforestsandvalleys.com
to start your adventure today!

For more information and to plan your visit, contact our Visitor Centres or the Southern Forests and Valleys website:

Manjimup (08) 9771 1831

Northcliffe (08) 9776 7203

Pemberton (08) 9776 1133

Walpole Nornalup (08) 9840 1111



Spend a day at the Manjimup Heritage Park




Manjimup
Heritage Park

**SOUTHERN
FORESTS & VALLEYS**
southernforestsandvalleys.com

Visitor Centres

Manjimup (08) 9771 1831
Northcliffe (08) 9776 7203
Pemberton (08) 9776 1133
Walpole Nornalup (08) 9840 1111

GREAT SOUTHERN

A realm of rugged beauty and grandeur, rippling with rich history and legend. Dramatic cliffs carved by crashing waves, idyllic seaside towns, and secluded pristine beaches made for picture-worthy moments. Further inland, dappled sunlight streaks through colossal karri, jarrah, and tingle trees, which hug ancient mountain ranges. Elevated adventure all around. Edible treasures packing your plate, plucked straight from the seas. Champion grapes nurtured by the breeze. Wander with nature, so perfectly wild.

f @greatsoutherntreasures | @discovergreatsouthern



SCAN TO LEARN MORE



KATANNING

  @visitkatanning

Slip into country life. Blankets of yellow canola pave the roadside, carpets of green grass the promise of winter. Salmon-coloured gums stand beside pastel pink lakes, a kaleidoscope of colour. Friendly locals offering warm welcomes to a town scattered with street art, sales yards, and history-laden sites. Further afield, farmstays connect you with the country. A tapestry of twinkling stars awaiting. Breathe in the bewitching magic of seclusion.

KOJONUP

Steeped in history, sprinkled with charm. Experience Australia's rural way of life. Captivating stories of cultural heritage, intertwined with long-forgotten settler stories. Walk trails dotted with wildflowers, curious wildlife peeking their heads out to say hello. There's serenity in the air, undulating hills to traverse, and streams to marvel at.

FRANKLAND RIVER

Ribboned vineyards flow across ironstone gravel landscapes, unveiling one of the most distinctive wine regions in Australia. Cool nights and warm days make for a Mediterranean smorgasbord. Quality olive oil and fruits, fresh produce, and blends boasting nothing less than finesse. Here you'll discover rolling hills, productive farmland, glistening lakes, and quaint cellar doors, ideal for a little taste-test.

CRANBROOK

Perched below ancient mountain ranges, where the horizon never ends and the skies are everlasting. Ripe in tradition and culture, there's pastel pink salt lakes to explore, bountiful farmland to discover, and lookouts perfect for a romantic sunset stroll.

MOUNT BARKER

 @visitmountbarkerwa

 @mountbarkervisitorcentre

Billion-year-old granite outcrops, timeworn forests, and the vestiges of years gone by. Welcome to Mountain Country. History and heritage are paved into every brick here, feel the pulse as you walk past rustic pubs, homely cafes, and award-winning bakeries. Fed by fresh mountain air, family owned wineries offer splendid sips, while dark night skies are a constellation of stories just waiting to be unfurled. Ancient lands, but new adventures.

PORONGURUP

Towering woods, mountain ranges engulfed by misty clouds, and awe-inspiring granite formations. Surround yourself in a shroud of karri trees, nothing but breathtaking views and bushwalking trails as far as the eye can see. Rejuvenate, relax, and reconnect with nature. Tasty tipples abound too. Boutique wineries lining the roads, crisp and luscious cool-climate wines begging to be savoured.

DENMARK | KOORABUP

 @DiscoverDenmarkWA

 @discoverdenmarkwa

Where jade-coloured canopies melt into white sandy beaches. Watch the tides of the surging Southern Ocean crash against the coastline, or hop around the bend to find a bay so calm it's like glass. Famed turquoise beach nooks lay in wait beside picturesque hills and mossy forests. Behind town sits a treasure trove of boutique wineries, where you can sip your way through cellar doors at your own pace. Discover inner quiet and go with the flow.

ALBANY | KINJARLING

  @amazingalbanywa

Sparkling aqua lagoons, pearl white coves, craggy cliff faces, and playful wildlife frolicking among the waves. Conquer the terrain, and yourself, high atop walking trails. Where every breath is a challenge, and every gold-soaked sunset is a reward. A deep history lies in the soil here, from war to whales, poetic moments steeped in legends of times long gone. Peer over the edge of the world, the ocean your soundtrack, the seabreeze your special effects. The only words on the tip of your tongue... wildly perfect.

BREMER BAY

Dig your toes into soft white sands at a coastal hamlet on the far reaches of the world. Brimming with orcas, the deep waters here will leave you spellbound, while calm coves offer sunshine and gentle hammock sways. As the sun sinks below the golden horizon, fire claiming the sky, the Milky Way rises to say hello.

TOP 5

THINGS TO DO IN THE GREAT SOUTHERN REGION

1 Glimpse majestic orcas in the waters of Bremer Canyon aboard a vessel from December to early April. Between May and September, spot Southern right whales calving in the bays, or watch humpbacks from the shoreline all along the coastline.

2 Explore the rich and vibrant history and heritage of Kojonup with a stop at The Kodja Place. Get lost in the rose maze, wonder at Aboriginal stories, and enjoy an ever-changing gallery of artworks.

3 Squeak your way across the sands of Little Beach outside Albany. Enjoy the famed granite boulders and see some of the most turquoise water around.

4 Pack the thermals, jacket, and camera and set off while it's still dark to summit Bluff Knoll just as sunrise breaks over the horizon. Or traverse the wild expanse of Bald Head Trail at sunset.

5 Learn about the sacred history of Australia's soldiers at the National ANZAC Centre in Albany. Standing proudly over King George sound, the museum puts you in the shoes of a real-life figure, letting you learn their fate as you wander the halls.



♀ BALD HEAD TRAIL



♀ THE KODJA PLACE



♀ SINGLEFILE WINES, DENMARK



♀ LITTLE BEACH



♀ NATIONAL ANZAC CENTRE, ALBANY



♀ BREMER BAY



VISITOR SERVICING IN THE GREAT SOUTHERN

Albany Visitor Centre

221 York Street, Albany

Tel: (08) 6820 3700

amazingalbany.com.au

Bremer Bay Community Resource and Visitors Centre

7 Mary Street, Bremer Bay

Tel: (08) 9837 4171

bremerbaycrc.com.au

Broomehill-Tambellup Community Resource Centre

34 Norrish St, Tambellup

Tel: (08) 9825 1177

tambellupcrc.net.au

Cranbrook Tourist Centre

Gathorne Street, Cranbrook

Tel: (08) 9826 1008

cranbrook.wa.gov.au

Denmark Visitor Centre

73 South Coast Highway, Denmark

Tel: (08) 9848 2648

denmark.com.au

Gnowangerup Community Resource Centre

47 Yougenup Road, Gnowangerup

Tel: (08) 9827 1635

gnowangerup.crc.net.au

Katanning

Tel: (08) 6830 1714

katanninghub.com

Kodja Place & Kojonup Visitor Centre

143 Albany Highway, Kojonup

Tel: (08) 9831 0500

kojonupvisitors.com

Mount Barker Visitor Centre

6/622 Albany Highway, Mount Barker

Tel: (08) 9851 1163

mountbarkerwa.com.au



In the towns of Frankland River, Katanning, Ongerup and Pingrup visitor information is available at the local Community Resource Centre.

ALBANY

Acclaim
HOLIDAY PARKS

Albany
HOLIDAY PARK

Conveniently located on Albany Highway this secure park is your base for all attractions in Albany. The park boasts easy access with pet-friendly powered sites, plenty of camping spots, room for the kids in the playground and open space. Wide range of accommodation options.





550 Albany Hwy, Milpara, ALBANY WA 6330
T: 08 9841 7800 M: 0458 688 398
Email: albanyholiday@acclaimparks.com.au
www.acclaimparks.com.au

ACCLAIM CARAVAN & CAMPING CLUB SAVE UP TO 20%

Quality Tourism Approved Business

BIG4 Emu Beach Holiday Park
Idyllic beachside destination close to Albany centre



Accommodation includes Deluxe Villas, Chalets, Apartments, Powered Caravan and Camping sites. Water splash park • Jumping pillows • Playground Rec room with lounge • Mini golf • BBQs Camp kitchen • Wi-Fi • Theatre • Kids Club during school holidays and much more.

8 Medcalf Pde, Emu Point
Ph 1800 984 411
big4emubeach.com.au

BIG4
HOLIDAY PARKS

ALBANY

Acclaim
HOLIDAY PARKS

Rose Gardens
BEACHSIDE HOLIDAY PARK
Relax to the Sights and Sounds of the Ocean

Beachfront caravan park in natural parkland setting on the shores of beautiful King George Sound and Emu Point. The spacious, air-conditioned ocean-view villas offer breathtaking views, whilst the pet-friendly caravan sites and camping areas offer shade and tranquillity. Close to tennis courts, lawn bowls and golf course.




45 Mermaid Avenue, Emu Point, ALBANY WA 6330
T: 08 9844 1868 M: 0498 698 868
Email: rosegardens@acclaimparks.com.au
www.acclaimparks.com.au

ACCLAIM CARAVAN & CAMPING CLUB SAVE UP TO 20%

G'DAY PARKS

Bremer Bay Beaches
Resort Tourist Park

Surrounded by spectacular, pristine beaches



Self-contained Family/Spa Chalets
Ensuite Cabins
Ensuite Caravan Sites
Caravan & Tent Sites
New Pool/Spa Wader
Camp Kitchen & Kiosk
Pet Friendly*

333 Wellstead Road, Bremer Bay
08 9837 4290
frontoffice@bremerbaybeaches.com.au
bremerbaybeaches.com.au

f

ALBANY HOLIDAY UNITS



1, 2 or 3 bedroom • Fully self-contained • Free Wi-Fi
19-21 Golf Links Rd, Albany WA
☎ 08 9841 7817 ✉ info@albanyholidayunits.com.au
albanyholidayunits.com.au

Denmark Scenic
TOURIST PARK



Studio suites | Ensuite caravan sites | NEW Cabins – coming soon!
Denmark's hidden gem!
denmarkscenictp.com.au
*Formerly Karri Aura Tourist Park

PEACEFUL BAY CARAVAN PARK



- 100m from the beach
- Pet friendly all year
- Fish & Chips, Cafe, Convenience Store, & Souvenirs

10 East Ave, Peaceful Bay
Phone 08 9840 8060
peacefulbaywa.com.au

DENMARK CHOCOLATE COMPANY

Handmade Chocolates
Beer, Wine, Port & Liqueur Pairing
Hot Chocolate & Coffee
Chocolate Timeline Garden Walk



VISIT WEBSITE FOR OPENING HOURS
0426 241 000 • 2023 South Coast Hwy, WA 6333




Affordable, airconditioned, self-contained, 1, 2 and 3 bedroom apartments. 90m from the beach and surrounded by natural bushland. ★★ ★★ & pet friendly

Emu Beach CHALETs

Phone 08 9844 8889
admin@emubeachchalets.com.au
emubeachchalets.com.au




Executive Suite Room

EMU POINT
MOTEL & APARTMENTS

Spacious motel, deluxe and executive studios. Budget and upmarket rooms available. Mini kitchens • 200m from the beach and surrounded by natural bushland. ★★ ★★

Phone 08 9844 1001
info@emupointmotel.com.au
emupointmotel.com.au

Parrys
ESTATE

Parrys Estate offers stylish accommodation surrounded by spectacular natural beauty.
parrysestate.com.au

P 0449 262 698
E stay@parrysestate.com.au



PEACEFUL BAY CHALETs

Spacious self-contained chalets with various accommodation configurations.

Located adjacent to the Walpole-Nornalup National Park and a 5-minute walk to the beautiful beaches.

The friendly kangaroos and peaceful environment will make your visit memorable.

peacefulbaychalets.com.au



BIG4 Middleton Beach Holiday Park

28 Flinders Pde, Middleton Beach, Albany, WA 6330

Phone: (08) 9841 3593 or Freecall: 1800 644 674

Email: holiday@holidayalbany.com.au

Web: www.holidayalbany.com.au

Facebook: [big4middletonbeachhp](https://www.facebook.com/big4middletonbeachhp)

Instagram: [big4midsbeach](https://www.instagram.com/big4midsbeach)



AAA ★★★★★

Beachfront Accommodation and Camping

Beach Access – Ocean Sound and View

Pool & Spa – Great & Fun Facilities – Self-Contained

Near Restaurants & Town - Multi Award Winner



ALBANY VISITOR CENTRE

Visit the **Albany Visitor Centre** for:

- Accommodation Bookings
- Tour & Ticket Sales
- Local Souvenirs & Gifts
- Tourist Maps & Information
- WA National Park Passes
- Virtual Reality Experience
- Regional Holiday Planners

And to purchase your **Great Southern Flexi Pass** to save on local attractions and experiences.

221 York Street, Albany, WA 6330

Mon to Fri 9am – 4pm, Sat & Sun 10am – 2pm

Public Holidays 10am – 2pm, Closed Christmas Day

P: (08) 6820 3700 | E: stay@amazingalbany.com.au

W: amazingalbany.com.au | f @: [amazingalbanywa](https://www.facebook.com/amazingalbanywa)



Great SOUTHERN FLEXI PASS

CHOOSE YOUR PASS
CHOOSE YOUR ADVENTURE



WAM

MUSEUM OF
THE GREAT
SOUTHERN

Uncover the stories of the
Menang Noongar people
and the social history of
the region.

Free entry | Open daily | 10am – 4pm

museum.wa.gov.au/greatsouthern



Historic Whaling Station • Australian Wildlife • Wildflower Garden



Experience the best of the South Coast at Australia's last Whaling Station.

Open 7 days 9am - 5pm (Closed 25 Dec)



81 Whaling Station Road, Albany WA 6330
P. (08) 9844 4021 | E. reception@discoverybay.com.au
discoverybay.com.au



NATIONAL
ANZAC
CENTRE

Prepare to remember,
learn and explore.



OPEN DAILY 9AM - 5PM

67 Forts Road, Mount Clarence, Albany

(08) 6820 3500

www.nationalanzaccentre.com.au



- History • Wildness
- Food & Wine
- Full and half day tours from Albany



albany tours

0418 414 425
albanytours.com.au



Chimes

SPA RETREAT

Luxury Accommodation & Day Spa



467 Mount Shadforth Road
Denmark, Western Australia

+61 (8) 9848 2255

WA NT TOURS



High-quality guided tours in
comfortable vehicles for small groups.

Flexible itineraries with
year-round departures.

08 9331 3933

info@want-tours.com.au

want-tours.com.au



koomaldreaming.com.au



boolabidi.com.au



kurrahmia.com.au



Aboriginal cultural tours in the South West

From traditional fire making to catch and cook on the beach,
dreamtime stories and cultural songs and music, experience the
world's oldest living culture in the South West.





THE NEXT TRAILS DESTINATION FOR YOUR BUCKET LIST



ICONIC HIKING TRAILS

- Journey the **Cape to Cape Track** between the iconic Cape Naturaliste and Cape Leeuwin lighthouses and enjoy spectacular coastal scenery.
- Traverse a trail of uninterrupted nature - from treetops to clifftops on the **Bibbulmun Track** from Walpole to Albany.



POPULAR HIKING DESTINATIONS

- Reach rugged peaks and summits on the ever-changing mountains in the **Stirling Range National Park**.
- Traverse the raw, unspoilt and rugged peninsula in the **Torndirrup National Park**.
- Explore off-the-beaten track in the **Fitzgerald River National Park**.



MOUNTAIN BIKING MECCA

- Get into the zone on the iconic **Munda Biddi Trail** and complete the longest continuous off-road cycling track in the world.
- Freestyle your way through WA's mountain biking hotspots, from the **Wambenger Trails Network** in Collie, to leisure and adventure trails in Nannup, to the **South West MTB Trails** in Margaret River and beyond.

2025 EVENTS AND FESTIVALS



SCAN TO LEARN MORE

From world-class surfing competitions to sumptuous food festivals, Australia's South West's calendar is full of exciting events. Wander open gardens to live beats, a mojito in hand. Feast on Sunday lunches prepared by rockstar chefs. And stand in awe in the presence of sporting greatness.

♀ PAIR'D, MARGARET RIVER REGION

JANUARY - APRIL

Orca Season

Join an expedition to Bremer Canyon, home to the largest known congregation of orcas in the Southern Hemisphere.

JANUARY

Festival of Busselton

A free family-friendly summer event set on the Busselton foreshore.

JANUARY 3 - FEBRUARY 2

Bunbury Fringe

Bringing cutting edge, diverse, eclectic shows from Australia and the world - to you!

JANUARY 7 - 8

Karnidale Circus Festival

Acrobats, aerialists, and sideshow superstars strut their stuff in Karridale.

FEBRUARY 8 - 9

Busselton Jetty Swim

Annual open water 3.6km swim around the iconic Busselton Jetty.

FEBRUARY 14 - 16

Boyup Brook Country Music Festival

A family-friendly celebration of country music.

FEBRUARY 21-22

South West Multicultural Festival

This Bunbury event takes you around the world in just a few hours!

FEBRUARY 22

Bunuru Festival

Celebrating the South West's rich Aboriginal cultural heritage, with live music, workshops, and stalls.

FEBRUARY 28 - MARCH 3

Nannup Music Festival

A long weekend of music, markets and magic set amongst this historic timber town.

MARCH 1 - 3

Tarmac Albany Sprints

A thrilling motorsport event for the whole family, with the wild Albany beaches as backdrop.

MARCH - JULY

South West Art Now

Featuring artwork by the South West's finest artists.

MARCH 15

South West Craft Beer Festival

Bask in beautiful Busselton while you sample the region's best brews.

MARCH 15 - 16

Harvey Harvest Festival

A fun community weekend, featuring the WA Grape Stomping Championships.

MARCH 21 - 22

Katanning Harmony Festival

A festival full of colour, culture, connection and excitement.

MARCH 22 - 23

RAC Karri Valley Triathlon

Take in the beauty of Pemberton and surrounds during this unique racing experience.

MARCH 29 - 30

XTERRA Dunsborough

Premier off-road triathlon series in Dunsborough's Meelup National Park.

MAY 17 - 26

Margaret River Pro

World-class surfers ride some of the world's best waves.

APRIL 5 - 20

Blackwood River Arts Trail

Visit artists and studios, and the Blackwood Film Festival.

APRIL 12

Balingup Small Farm Field Day

See the best in sustainable small-scale farming and cottage industries.

APRIL 12 - 20

Easter Art Festival

Enjoy the holidays with this inaugural event, celebrating the arts.

APRIL 19 - MAY 4

Southern Forests & Valleys Heritage Festival

Discover nature, culture, and heritage with family-friendly activities and demonstrations.

APRIL 19

Donnybrook Apple Festival

Harvest and arts - this festival is a feast for the senses.

APRIL 25

ANZAC Albany

Honour Australian service men and women at commemorative services in Albany - the last port of call for many troops during the First World War.

APRIL 26

Northcliffe Karri Cup MTB Challenge

One of WA's largest and longest running mountain biking events, through some of the world's tallest trees.

APRIL 26 - 27

Southern Peaks

Weekend festival in Albany for mountain bike enthusiasts and adrenaline-seekers.

MAY

Taste Great Southern

The heart of Western Australian food and wine - taste the flavours of the Great Southern.

MAY 3 - 4

Festival of Country Gardens

Southern Forests & Valleys open spectacular private gardens.

MAY 3 - 4

Busselton Festival of Triathlon

A weekend of triathlon for all ages and abilities taking in the iconic Jetty, Tuart Forest and foreshore.

MAY 9 - 11

Margaret River Readers & Writers Festival

A 3-day storytelling spectacular featuring Australian authors, journalists and big-thinkers.

MAY 10 - 11

Margaret River Ultra Marathon

Run past famous surf breaks, iconic wineries and charismatic coastal villages.

MAY 16 - 18

Forest Rally

3 days of action-packed motorsports in the forests around Nannup.

MAY 17

SEVEN Gravel Race

Spectacular climbs and WA's best gravel trails form the ultimate one-day cycling challenge in Nannup.

MAY - DECEMBER

Whale Watching Season

Spot pods of humpback and southern right whales migrate along the coast. Join a tour from Augusta or Albany in winter to spring, and Busselton or Dunsborough from spring to early summer.

MAY 31 - JUNE 1

Albany Classic "Around the Houses"

More than 150 vintage cars compete in a race around the city streets of Albany.

JUNE 1 - AUGUST 31

Fridgetown Fest

A winter festival in picturesque Bridgetown - the winter capital of WA!

JULY 1 - 31

Albany Maritime Festival

Immerse yourself in the nautical soul of the Great Southern.

JULY 18 - 27

Cabin Fever

There's fire, food and fun at this winter foodie festival in Margaret River.

JULY 5

Collie River MTB Marathon

Leave the road, take the trails with a marathon event for riders for all ages and abilities.

JULY 6 - 13

NAIDOC Week

Celebrating the history, culture and achievements of Aboriginal and Torres Strait Islander peoples.

AUGUST - SEPTEMBER

Wildflower Season

Witness an explosion of colour in the South West during spring.

AUGUST 8 - 17

Nannup Flower & Garden Festival

Nannup is bursting with colour during this winter floral festival.

AUGUST 23 - 24

Balingup Medieval Carnivale

Step back in time with medieval performers, parades and hand-crafted wares.

AUGUST 30 - SEPTEMBER 7

CinefestOZ Film Festival

A festival for movie lovers across Busselton, Bunbury, Dunsborough and Margaret River.

SEPTEMBER 1 - OCTOBER 31

Bloom Festival

The Great Southern Treasures springs to life showcasing the region's rare blooms.

SEPTEMBER 8 - 21

South West Japan Festival

Celebrating the art, culture, food and history of Japan, here in the south west!

SEPTEMBER 13 - 28

Margaret River Region Open Studios

The biggest art event of its kind in Australia, showcasing the region's vibrant visual arts scene.

SEPTEMBER 19 - NOVEMBER 16

Blooming Wild Festival

Celebrate wildflower season in Southern Forests & Valleys.

SEPTEMBER 27 - OCTOBER 12

Southern Art and Craft Trail

Exhibitions and open studios showcasing visual arts and crafts of the Great Southern.

OCTOBER 16 - 19

True Grit WA

Run, crawl, and climb with this military inspired obstacle challenge.

OCTOBER 1 - 31

Dardanup Bull & Barrel Festival

A free family festival culminating in the 'lighting of the bull' fire sculpture.

OCTOBER 10 - 11

Walk on the Wildside

Explore the quirkiest collections Boyup Brook has to offer.

OCTOBER 17 - 19

Lost & Found Festival

Eat, drink and play throughout the Bunbury Geographe region at more than 20 events.

OCTOBER 31 - NOVEMBER 2

Tour of Margaret River

The ultimate cycling race for teams set in the South West.

NOVEMBER 1 - 2

Pemberton Avocado Festival

Unlock the taste of this fresh favourite at a festival dedicated to everything avocado.

NOVEMBER 1 - 30

Geo Bay Cool Water Classic

Point-to-point open water swim following the sandy beaches of Geographe Bay.

NOVEMBER 1 - 30

Great Southern Stage Run

3-day trail running stage race along sections of the Bibbulmun Track.

NOVEMBER

Pair'd

Uncork magic at the Margaret River Region's premiere wine and food festival.

NOVEMBER 7 - 9

Blues at Bridgetown

A 3-day music festival showcasing the best of blues and roots.

DECEMBER 6 - 7

Ironman WA

A bucket-list race for athletes in the seaside town of Busselton.



PLAN YOUR EVENT

Searching for a dream wedding location, a unique conference space, or a breathtaking events venue sure to wow? Look no further than the South West.

Discover a region brimming with locations and businesses ready to deliver events deeper than your wildest dreams.

Visit australiassouthwest.com/plan-your-event to get started today.

ADVENTURE

Hike the untouched. Ride tracks unbeaten. Wander beaches untrodden. Catch sunrise and the perfect wave – the kind surfers cross the globe for. Hike to the treetops. To the rugged clifftops. Catch your breath, only for the vista to take it away again, across powder-white sands and endless blues. Let your mind wander, down to the edge of the world where great oceans meet. Go rock hopping. Diving into impossible aqua-marine lakes and lagoons. Journey into a cathedral of karri and jarrah trees. Find your mountain bike flow state and go with it, pure forest air fuelling every peddle. Hire a kayak. Paddle around a bend. And another. Decide to leave civilisation far behind.

♀ WILYABRUP SEA CLIFFS



SCAN TO LEARN MORE

ABSEILING

A rush like no other as you plummet from a cliff, rope holding you safe and swinging you into adventure.

Popular spots for guided climbing tours include the caves of the Leeuwin ridge, or the stunning Wilyabrup Sea Cliffs with Margaret River Climbing Co, Outdoor Discoveries, and Space Chameleon Adventure Co.

If you're experienced and want to do your own self-guided abseil, please note you must notify a park ranger.



♀ LAKE POORRAREGUP

PADDLING

With calm waters in summer and full banks ready for adventure-seekers come winter, the South West offers plenty of waterways flowing with fun.

Blackwood River, Southern Forests & Valleys

The largest river in the South West, snaking its way through Boyup Brook, Bridgetown and Nannup, before meeting the coastal waters of Augusta. Canoe and kayak with the whole family.

Stockton Lake / Black Diamond Lake, Collie

Old mining pits that boast the bluest (and coldest) water, set among the dazzling National Parks of Collie. Ideal for floating the day away on a stand up paddleboard.

Coalmine Beach, Nornalup

Resting on the shores of the Nornalup inlet and teeming with wildlife, this sanctuary is the perfect place to launch a small boat, canoe, or kayak.



♀ NORNALUP

CYCLING & MOUNTAIN BIKING

From crunchy gravel, to dirt paths that weave through towering trees, there's an outstanding network of cycling trails in the South West. There are also a range of operators providing Mountain Bike hire, as well as guided e-bike tours with companies such as Adventure Connections.

Tank 7, Nannup

250m to 3.4km | Varying difficulties
Rough, raw and rocky, this is a must-do for any mountain biking enthusiast. Designed to maximise the region's natural elevation and picturesque landscape, the trail suits a range of abilities from beginners to experienced mountain bike riders.

Grizzly Trail, Mount Lennard, Wellington National Park

6km | Difficult
Challenge yourself with an obstacle course of sloped turns, narrow tracks, and gorgeous winding paths through jarrah forests and granite outcrops. More than 40km of bike trails make up the park, so there's always another path to ride when you're done.



♀ TANK 7, NANNUP



♀ WILD GRAVEL

Relentless Blue, Pemberton MTB Park, Pemberton

4.5km | Difficult
Turns, switchbacks, log rollovers, wall rides, earth berms, and what is only known as 'the Hell Mile'. PSA this one isn't for the faint-hearted. The western side of the trail features the main climb, while the eastern side leans into cross-country elements that get the blood pumping.

Huff n' Puff, The Pines, Margaret River

900m | Easy
Located on the edge of the Margaret River township, the Pines are some of the best mountain bike trails in WA. This one in particular is a beauty for beginners, with a gentle, winding climb, firm terrain underfoot, and an easy end at the start of the jump trails.

Rays Trail, Arklow Trail Network, Collie

8km | Difficult
An adaptive trail with disabled access, the Arklow Trail Network is great for a weekend away or just a simple day trip. Start your ride with twists and turns, before encountering berms as you travel further downhill. You'll then be greeted by an uphill climb. Take your time to catch your breath before finishing up with several large log rides.

Albany Downhill Mountain Bike Trail, Albany

700m | Very difficult
Don't let the length of this trail fool you... In less than a kilometre you'll experience 41 jumps, wooden berms, a 76m drop, and some of the most breathtaking views of King George Sound. Just a couple of minutes from the city centre, the trail is great for daring experts looking for their thrill fill.

Munda Biddi Trail, Australia's South West

1,000km | Varying difficulty
One of the world's longest off-road cycling trails, this colossal track stretches from Kalamunda in Perth, all the way down to Albany, in the Great Southern. Cycle through towering eucalyptus and karri forests, unspoiled bushland, and beautiful wildflower heaths. You can pick just a section to cover if you're lacking on time, with local tour operators also providing pick up and drop off points. Ask at visitor centres for more information.

Visit trails.wa.com.au for more South West mountain biking and cycling trails and maps.





BEST BEACHES

BLOSSOMS BEACH, BREMER BAY

Crystal clear water and squeaky white sand. Perfect for swimming.

BUNKER BAY, DUNSBOROUGH

A tranquil little cove, picture-perfect with its brilliant white sand and some of the clearest water in the country. A swimmer's delight.

GEOGRAPHE BAY, BUSSELTON

Close to the Busselton Jetty, cafés and picnic facilities. Ideal for a beach day for the whole family.

GNARABUP BEACH, MARGARET RIVER

Tucked in a protected bay, with a delicious café on site. Popular among early morning swimmers.

GREENS POOL, DENMARK

A shallow cove, boasting mint-green waters, and steps from Elephant Rocks. Swim, stand-up-paddleboard, or enjoy a spot of snorkelling.

HAMELIN BAY, NEAR AUGUSTA

White sands backed by pale limestone cliffs and turquoise water. Home to a number of friendly rays.

KOOMBANA BAY, BUNBURY

Disabled access, and frequented by friendly dolphins, especially on summer mornings. Nearby cafes, and kids playgrounds.

LITTLE BEACH, NEAR ALBANY

Crisp white sand, world-famous granite boulders decorated with orange lichen, and azure ocean tides. Don't forget to bring shelter if you're spending the day.

MARGARET RIVER MOUTH, MARGARET RIVER

Where the Margaret River meets the Indian Ocean. An icon of the landscape, a world-renowned surf break lies just around the corner.

MIDDLETON BEACH, ALBANY

A family oasis, featuring calm waters, BBQs and ocean pool lanes during summer.

SMITHS BEACH, YALLINGUP

A long stretch of ethereal pale sand, hugged by aquamarine water. Grab the surfboard or the sunnies for a lovely day out.

Australian beaches are some of the best in the world. We hope you enjoy them, but please take a moment to learn about rip currents and coastal dangers at mybeach.com.au. Find out which beaches are patrolled by Surf Life Saving Australia at beachsafe.org.au or visit sls.com.au. Check tide times online at willyweather.com.au



♀ BUSSELTON JETTY,
MARGARET RIVER REGION

DIVING & SNORKELLING

Underwater worlds await, the sea floor glistening with streaky sunlight, reefs teeming with coral, and an abundance of marine life to spy hidden in rockpools. With the Indian and the Southern Oceans colliding off the coast of Cape Leeuwin, warm and cool currents mix in a unique phenomenon, making for some of the most extraordinary sights.

Busselton Jetty, Busselton

Home to over 300 species of marine life, this is often regarded as one of the best artificial reef dives in Australia. Uncover bright coral species, stingrays, seahorses, and more, as you swim between the massive wooden pylons. And that's all before you happen upon the underwater sculpture trail, a sunken treasure hunt perfect for exploration.



♀ NORNALUP



♀ PEMBERTON

FISHING

With more than 1000kms of coastline and even more inland waterways, fishing has long been a traditional past time in the South West.

Along the beaches and jetties look out for dhufish, herring, skippy, snapper, bluefin tuna, groper, cod, tailor, samson, salmon (ngari), rock lobster (crayfish), abalone, crab, and squid.

While the rivers and dams are often brimming with marron (during season), rainbow trout, whiting, flathead, bream, and redfin perch.

Please check fish.wa.gov.au for rules, regulations, and licences required for fishing throughout the South West.

FOUR-WHEEL DRIVING

Dream-worthy tracks over cream coloured sands, the sky beyond, the radio cranked high. Off road adventures are scattered throughout the south west, so gear up, let the air out your tyres and get going!

- Fitzgerald River National Park, Bremer Bay
- Boranup Beach, Margaret River Region
- Cheynes Beach, Albany
- Yeagarup Dunes, Pemberton
- Holland Track, Broomehill

If you are using a hire car, please make sure you check conditions for driving off road, or take a tour with a professional driver.

Yallingup Lagoon, Margaret River

Sheltered from the buffeting coastal winds, this lagoon combines sun, sand, and salty air. Ideal for everyone from beginners to expert snorkellers, an array of ledges, crevices, reefs, and open sections hide stingrays, schooling fish, octopus, and grassy gardens.

Shipwrecks, Bunbury to Albany

Explore the sunken depths of ships long gone, sprawled out along the South West coast. In Bunbury, 'The Lena' provides massive swim throughs and an open engine room. Dunsborough's 'The Swan' is a former HMAS destroyer scuttled in 1997 and now lying between 6m and 31m. While 'The Perth' in Albany, is a decommissioned 133m guided missile destroyer, bearing scars from the Vietnam War. Don't forget the Hamelin Bay wreck trail either.



♀ YEAGARUP DUNES

FUN PARKS & PLAYGROUNDS

Kids got some energy to burn? The South West is full of places for little ones to explore, including fun parks, playgrounds, and skate parks. Best yet, most provide free entry.

Donnybrook Apple Fun Park, Donnybrook

The biggest free fun park in the Southern Hemisphere, with 10 metre slides, swings, rocking horses, and climbing frames.

Manjimup Heritage Park Adventure Playground, Manjimup

Brave the 17 metre slide, 40 metre flying fox, climbing towers and swings.

All Ages Playground, Katanning

Designed to bring community together, the playground features seesaws, spinners, tunnels, a 30 metre flying fox, and 10 metre slide.

Koolambidi Woola Youth Precinct, Bunbury

Great for kids of all ages, the precinct boasts a sport court, parkour area, mini golf, beach climbing net, skate bowl and more.

Play On The Bay, Busselton

A nautically-themed adventure playground, located right on the sands of Busselton Foreshore. A giant side-turned boat is great for climbing, with water sections for summer.

HIKING

The breeze at your back, the sun on your face. Hiking the South West is worth the sore calves when views like these are involved.

Bald Head

Turquoise bays either side, lead you along the rocky path towards Flinders Peninsula and one of the best views in all of Albany. The 12.5km return hike can take anywhere between 6 to 8 hours, with steep terrain, granite slopes, and the most breathtaking end point imaginable.

Granite Skywalk

A steep 3km-return walk trail through the spectacular forests of the Porongurup National Park. Enjoy breathtaking, panoramic views atop Castle Rock, across Mount Barker and beyond.

Mount Frankland | Caldyanup

Featuring disabled access, the Wilderness View Lookout at Mount Frankland affords stunning views across the karri, jarrah, and tingle forests, with a walk trails also around the base of this 411m-high granite outcrop.

Valley of the Giants Tree Top Walk

Located between Walpole and Denmark, this disabled access 600m-long tree top walk rises 40m above the forest floor. Stroll through the canopy, swaying gently in the breeze. Down below the Ancient Empire awaits – a grove of massive, 400-year-old tingle trees rich in history.



♀ BLUFF KNOLL

Bluff Knoll | Bular Mial

The highest peak in the South West, the hike to the summit of this behemoth is a 2 to 4 hour odyssey. Conquer the 1099m peak at sunrise to watch the sky be painted in gold. Or head up in winter for the chance to see snow.

MAZES

From a half hectare hedge maze to a labyrinth grown from native and exotic shrubs – spend hours unlocking the mysteries of the region's many a-maze-ing attractions with your friends and family.

- A Maze'n, Margaret River
- Boranup Forest Maze, Karridale
- Yallingup Maze, Yallingup
- Denmark Maze, Denmark

SURFING

With more than 100 surf locations along the coast, the South West has one of the most consistently surfable coastlines in the world. From weekend warriors to professionals - there's a wave to suit surfers in most conditions. Make sure you check the swell and wind forecast before heading out.

Shallows Beach, Yallingup

Protected from the daily southerly winds. Best up to 1.7m swell.

Contos Beach, near Margaret River

A sheltered beach from strong Easterly winds. Best up to 1.5m swell.

Left-handers, Gracetown

The most consistent stretch of coastline in the SW. Five different waves. Best up to 2m swell.



♀ ALL AGES PLAYGROUND, KATANNING

Main Break, Surfers Point

Home of the Margaret River Pro, where top-ranked surfers compete to win the World Surf League's World Championship Tour. Best up to 4m swell. Experienced surfers only when over 2m.

Muttonbird Island, near Albany

Suitable for all surfers. A beach break you can drive on. Best up to 2.5m.

Ocean Beach, Denmark

Denmark's primary surfing beach is good for both beginners and experts. Best up to 3m.

Smiths Beach, Yallingup

Stunning views over the reef and beach, protected from southerly winds. Best up to 2.5m

Three Bears, Yallingup

Four-wheel drive access, premier reef break, very consistent. Best up to 2.5m

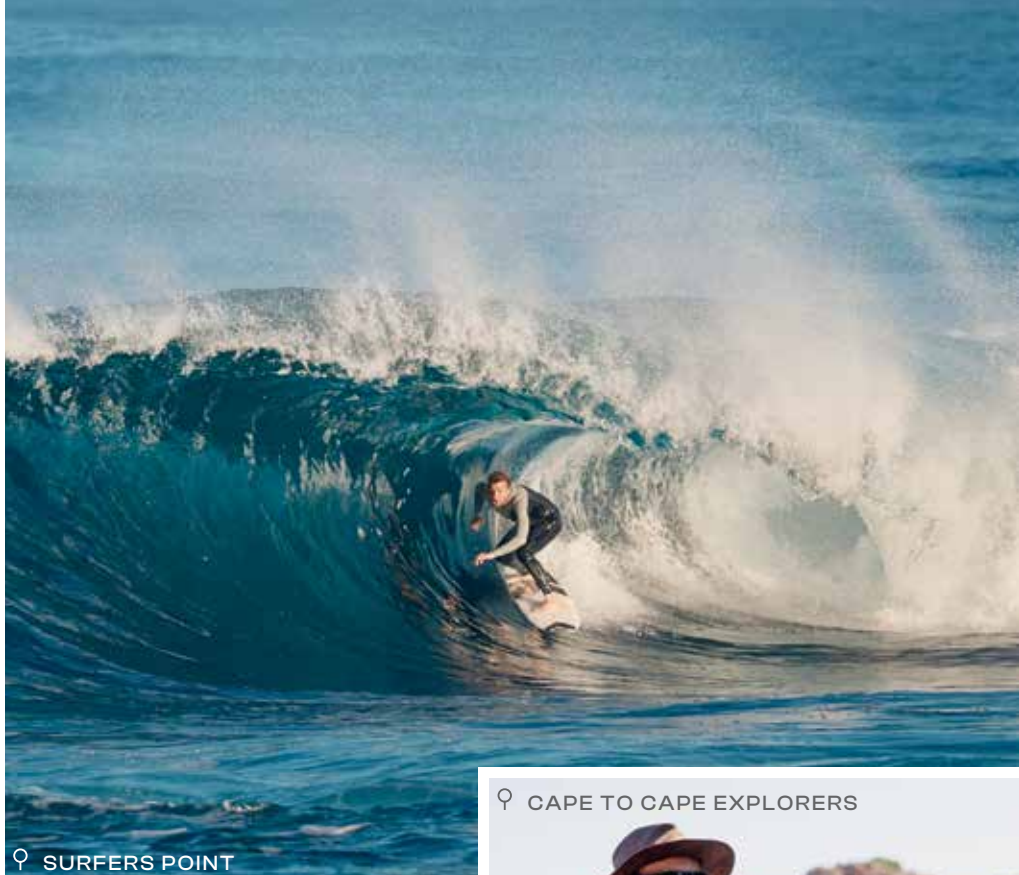
Don't know how to surf? No worries. Take surfing lessons at one of the many surf schools in the region. Head to your closest visitor centre to find more information. Download the SharkSmart WA app to stay alert to marine activity.

TRAILS & TRACKS

Grab your boots and adventurer's spirit, and step into a world of vast vistas, untouched landscapes, and unforgettable sunsets. There's no shortage of walking trails in the South West, each offering a window into the wild.

Bibbulmun Track

Stretching for nearly 1,000km from Perth to Albany, it features areas of old growth forest, quaint farmland, rugged coastal cliffs and remote beaches. Considered one of the world's great long distance walk tracks.



♀ SURFERS POINT

Cape to Cape Track

Spanning 124km between Cape Naturaliste Lighthouse and Cape Leeuwin Lighthouse in the Margaret River region, the trail traverses soft sand beaches, peaceful forests, and plenty of dramatic coastal heaths. A 3.7km disabled access section near Sugarloaf Rock offers options for all to enjoy. Easy sections make for excellent half-day walks, or conquer the whole trail in five to seven days, with options available for transfers and drop-offs. Many tour operators also offer fully-guided single or multi-day walks.

For a comprehensive list of walking trails to suit your interests and ability, visit trailswa.com.au.

♀ CAPE TO CAPE EXPLORERS



LEAVE ONLY FOOTPRINTS

Follow these rules to ensure our national parks and nature reserves remain places of pristine beauty.

- Leave what you find, look but do not touch Aboriginal art or disturb sites of cultural significance
- Dispose of waste properly
- Minimise campfire impacts
- Respect wildlife, flora and fauna
- Travel and camp on durable surfaces



♀ ECO ADVENTURES MARGARET RIVER

CULTURE AND HERITAGE



SCAN TO LEARN MORE

ABORIGINAL OPERATORS

Boola Bidi Dreaming Centre

A hub of Aboriginal culture in Harvey (Korijekup), come learn about Bindjareb Noongar Country from its custodians. Take a bushtucker and medicine tour to explore how South West vegetation has been used for tens of thousands of years. Walk alongside local elders, taking in the stunning views of the backwaters of Harvey Dam on a guided tour. At the centre, there is an extensive retail range of Aboriginal products, including clothing, artwork, homeware, giftwares, books, native food, artefacts and more.

Koomal Dreaming

Walk beside Wadandi custodian Josh 'Koomal' Whiteland in Yallingup, and connect with history like never before. Uncover the secrets of bush medicine, taste native foods that have sustained

generations, learn about the local Noongar people, and listen to tales weaving ancient Dreaming legends into story and song. Whether you join him for a twilight tour and epic sunset views, or listen to the sounds of his didgeridoo reverberate deep inside the caves, Josh offers a magical, authentic and personal experience of the world's oldest living culture.

Kurrah Mia

Walk ancestral trails across Albany (Kinjarling), guided by Noongar custodians who share with you stories passed down by their ancestors for thousands of years. Learn about how the Menang Noongar people moved through the land for hunting and gathering, ceremonial rituals, and daily life. Taste-test traditional foods and visit sacred meeting places and fishing grounds. When you come on Country, you not only hear their stories but experience the journey.

Ngalang Wongi Aboriginal Cultural Tours

A natural born storyteller, there's nothing like hearing Troy Bennell talk about the cultural and historical life of Bunbury (Goomburrup). Learn how to make weaving twine from river bulrushes, unearth bush chillis, and listen to whimsical yarns about the traditional way of life he experienced growing up. Take in culturally significant sites, Aboriginal street art, and visit natural wonders such as the 130 million year old basalt rocks, and serene mangroves of the inlet on one of his guided tours.

The Kodja Place

An interactive experience that allows you to explore the overlapping stories of the region. Walk through the Australian Rose Maze to learn the poignant stories of three women - Yoondi the Noongar, Elizabeth the English, and Maria the Italian - who represent the challenges faced by settlers



♀ WARDANDI BOODJA, KOOMBANA BAY, BUNBURY

and traditional custodians. Sit at Yoondi's Mia Mia, a special gathering spot with two bush shelters, and enjoy the local wildflowers, or peruse the gift shop to view authentic Noongar paintings, clothing, and apparel.

Yallingup Aboriginal Art

Margaret River's largest dedicated Indigenous fine art gallery, this space was opened in 2024 to foster a deeper understanding and appreciation of Indigenous culture, and provide a platform for Indigenous artists to share their stories and talents with visitors from across Australia and the world. Artworks are constantly changing, with pieces from local Noongar artists and others from Northern WA, the Western desert, Northern Territory, and North Queensland. Wander and take in the stunning colours and designs of the art, clapping sticks, didgeridoos, and books on display.

ART GALLERIES

Vibrant paintings, expansive landscapes, intricate jewellery pieces, events, and studios brimming with sculptures. Each work telling the stories of acclaimed local artist and creatives.

- Boola Bidi Dreaming Centre, Harvey
- Collie Art Gallery, Collie
- Bunbury Regional Art Gallery, Bunbury



♀ PINGRUP GRAIN SILOS

- Bunbury Museum and Heritage Centre, Bunbury
- Yallingup Aboriginal Art, Yallingup
- Kodja Place, Kojonup
- Understory Art and Nature Trail, Northcliffe
- Margaret River Region Open Studios, Margaret River (September)
- REDSEA Art Gallery, Margaret River
- Southern Art and Craft Trail, Southern Forests (September-October)

HISTORY

With an indigenous history dating back more than 50,000 years, and settler heritage spanning the last few hundred, there is a rich complexity to the South West that's waiting to be told. Hear yarns from traditional operators on tours through Country, learning about bush medicine, Dreaming stories, and the region's six seasons. Visit the National ANZAC Centre to hear tales of war time, and the brave soldiers who fought for our country. And experience life from yesteryear, at places like Albany's Historic Whaling Station and the Old Courthouse Complex in Busselton.

MURALS

Splashed across brick walls and tucked away in back lanes, you'll find a myriad of treasured artwork in Australia's South West. Internationally renowned artists have leant their brushes for these masterpieces, perfect for an afternoon hunt. Bunbury, Collie, Mount Barker, and Katanning, have trails through the city, while there are giant grain silos in Albany and Pingrup well worth the visit. Don't forget the 8,000sqm mural of Wellington Dam, the 2023 State Winner of the Street Art Awards.

NATURE AND WILDLIFE

One-in-a-lifetime wildlife encounters and pinch-me moments in untouched nature. Killer whales leaping from inky blue depths. Chasing a catch. Riding the bow. Dolphins joining you for a paddle or a swim, flashing you a cheeky smile. Dive through colourful coral towers, giant stingrays gliding by your feet. Leviathans breaching and spy-hopping, playing peek-a-boo along the Humpback Highway. Echoes of megafauna and millennia leading you deep into karri and marri forest. Into the powerful stillness of ancient limestone caves. Towering tingle trees sharing their age-old stories with a whisper as you ascend into the canopy. Emus, kangaroos and the rarest, delicate orchids popping up from the undergrowth. Shape-shifting rocks like elephants bathing in a crystal pool. Climb atop. Ride them into the Southern Ocean. Next stop, Antarctica.



SCAN TO LEARN MORE

COASTAL ATTRACTIONS

The smell of salt in the air, the wind whistling through your hair, and the call of the wild waiting. Don't forget to visit these coastal gems.

Lighthouses

From coast to forest and beyond. Head up the historic Cape Leeuwin Lighthouse, the tallest lighthouse on mainland Australia and the place you will witness the Southern and Indian Oceans meet. Further north, Cape Naturaliste Lighthouse offers guided tours and breathtaking panoramic views from its top balcony.

Busselton Jetty

Welcome to the longest wooden piled jetty in the Southern Hemisphere, stretching some 1.841km out to sea. It takes 20 minutes to walk the boards, or rest your feet and catch the electric solar-powered train to the end, where you'll find one of just six underwater observatories in the world. Discover more than 300 species of sponges and corals in the serene depths.

Albany's Historic Whaling Station

Learn about the last operating whaling station in Australia, providing fascinating insight into an industry long past. Climb aboard the Cheynes IV, the world's only

preserved whale chaser ship, immerse yourself in exhibits like the giant blue whale skeleton, and explore the wildlife park and wildflower garden.

Canal Rocks

Wander over the Indian Ocean, along timber bridges and pathways. Thousands of years of pounding waves have carved out a narrow channel between the granite rocks where water rushes and gushes by. Watch it from the main bridge (you might cop a spray on a rough day) or spend time searching some of the calmer rockpools in the area. Nearby calm waters are perfect for a dip or the chance to see dolphins.



♀ JEWEL CAVE

CAVES

Explore the depths of natural time capsules, holding stories of the extensive history of the South West and the local Wadandi people. More than 150 limestone caves descend beneath the Leeuwin-Naturaliste Ridge, home to ancient fossils, operatic caverns, and spectacular crystal formations.

Jewel Cave

The biggest show cave in Western Australia, this underground gem comprises three massive chambers. It features one of the longest straw stalactites found in any tourist cave in the world, measuring 580cm, the crystal creations within taking thousands of years to form. Fully guided tours available 9am to 5pm.

Lake Cave

A mirrored wonderland, home to the mighty 'suspended table', a spectacular crystal decoration hanging from the ceiling

and weighing several tonnes. The most actively dripping cave, it features a pristine chamber, permanent lake, and entrance through a sunken doline. Fully guided tours available 9am to 5pm.

Mammoth Cave

A complete nature experience, observe the fossils of long-extinct megafauna, sparkling stalagmites, and the majestic marri forest. Wheelchair access is available for the first chamber. Self-guided walk throughs available 9am to 5pm.

Ngilgi Cave

Named for one of the dreamtime spirits of the Wadandi people, this cave offers a stunning display of stalactite, stalagmite, helictite and shawl formations. Above ground, the Ancient Lands experience brings to life the story of the creation of the land, cave, and unique flora and fauna. Semi-guided and fully guided tours available 9am to 5pm.

Sugarloaf Rock

Rising above the ocean like a tessellated pyramid, this famous rock draws open-mouthed audiences when the descending sun sets over it in orange hues. Situated within the Leeuwin-Naturaliste National Park, turn your head back to the mainland and you'll spot Cape Naturaliste Lighthouse peaking above a horizon dotted by wildflower scrub.



♀ CAPE LEEUWIN LIGHTHOUSE



♀ STINGRAY, HAMELIN BAY



♀ ORCAS, BREMER BAY



♀ GOLDEN VALLEY TREE PARK

GARDENS & NATURE PARKS

Soils bursting with brilliant colours, shady trees to lounge under, and the sweet scent of flowers on the wind. Australia's South West is abundant in places to reconnect with nature.

Golden Valley Tree Park, Balingup

Western Australia's largest arboretum, hosting trees from all over the world. A stunner all year round, but particularly during Autumn.

Big Brook Arboretum, Pemberton

Wander exotic trees, from sequoias to spotted gums. Nearby, the Big Brook Dam is great for swimming, or stay the night at one of the camping spots.

Holberry House, Nannup

Tranquil gardens in Nannup town, open to the public during the day and featuring metalwork sculptures, ducks, and a small waterfall.

MARINE LIFE

From orcas on the hunt to stingrays that glide through the shallows, and humpback whales blasting their breath into the air, the South West is teeming with life beneath its beautiful blue waters.

Southern Right, Humpback & Blue Whales

Between May and December, the coast comes alive with whale song, as the annual migration occurs. Early in the season, the whales travel from Bremer Bay to Albany and Augusta, before heading northwards. While later in the season they return past Busselton and Dunsborough on their long journey back to Antarctica. Whale watching cruises depart daily (weather and season dependent) from Albany, Augusta, Busselton and Dunsborough. Hop on board with a local operator for an up close experience.

Spot them from the shores here:

- Cape Leeuwin Lighthouse and Flinders Bay, Augusta
- Cape Naturaliste Lighthouse, Margaret River Region
- Cape to Cape Track, Margaret River Region
- Point D'Entrecasteaux, south of Northcliffe
- Conspicuous Cliff, east of Walpole
- Ocean Beach, Denmark
- Torndirrup National Park, near Albany
- Fitzgerald River National Park, east of Bremer Bay

Dolphins

Cheeky and intelligent, there's nothing quite like spotting a dolphin in the wild. You can find these beauties at beaches from Bunbury Geographe to the Great Southern. Hop aboard an eco-cruise or swim tour (summer) at the Dolphin Discovery Centre for a guaranteed sighting.

Spot them here:

- Koombana Bay, Dolphin Discovery Centre, Bunbury
- King George Sound, Albany
- Blackwood River and Flinders Bay, Augusta
- Sugarloaf Rock, Yallingup

Stingrays

Elusive creatures, the South West is home to a variety of species, including Smooth Rays, Black Rays, and Eagle Rays.

Spot them here:

- Boat ramp and old jetty, Hamelin Bay
- Bunker Bay, Dunsborough
- Yallingup Lagoon, Yallingup

Orcas

From December to April, the seas off Bremer Bay swell with one of the greatest apex predators around - the orca. Bremer Canyon, some 50km from the mainland is home to largest pod of orca in the Southern Hemisphere, with up to 100 killer whales spotted. Charter boats depart from Bremer Bay during the season, with bus transfers also available from Albany.



♀ BEEDELUP FALLS, PEMBERTON



♀ WELLINGTON NATIONAL PARK, COLLIE

WATERFALLS & WATERWAYS

Incredible aquatic experiences aren't just limited to the coast, with the region boasting stunning waterfalls, lakes, rivers, and inland pools.

Bunbury Geographe

- Lake Brockman, Harvey
- Wellington Dam, Collie
- Stockton Lake, Collie
- Black Diamond Lake, Collie
- Honeymoon Pool, Collie
- Lake Kepwari, Collie
- Minninup Pool, Collie
- Ironstone Gully Falls, Capel

Margaret River Region

- Quinninup Falls, Wilyabrup
- Kevill Road Waterfall, Margaret River
- Meekadarabee Falls, Cowaramup

Southern Forests & Valleys

- Greenbushes Pool, Greenbushes
- Glenoran Pool, Manjimup
- Fonty's Pool, Manjimup
- Barrabup Pool, Nannup
- Beedelup Falls, Pemberton
- The Cascades, Pemberton
- Pemberton Pool, Pemberton
- Fernhook Falls, Walpole
- Circular Pool, Walpole

Great Southern

- Waterfall Beach, Denmark

To help preserve these unique natural environments, please stick to the walking trails and take all rubbish away with you. Please respect special sites by only taking photos and not altering the landscape. When travelling through remote areas, advise local park rangers, check information about closures, and pay close attention to road and weather conditions.

NATIONAL PARKS

With 24 national parks, there's no shortage of remote areas to encounter and enjoy.

Burgeoning with native flora and fauna, pets are not allowed in any national park. Entry fees are also required for access to many of the parks, with passes available from Parks and Wildlife offices, visitor centres, and online. Check before travelling and make sure you always display your pass on your vehicle windscreen to avoid fines.

See parks.dpaw.wa.gov.au for more.

BORANUP KARRI FOREST

An isolated forest boasting dappled sunlight and gorgeous wildflowers, this grove of 100-year-old karri trees offers one of the most beautiful drive trails in the region.

D'ENTRECASTEAUX NATIONAL PARK

Wild, pristine beauty, unspoilt beaches, rugged coastal cliffs, and towering karri forests. Don't forget to visit Yeagarup Dunes. Fees applicable.

FITZGERALD RIVER NATIONAL PARK

A UNESCO recognised international biosphere reserve, this park possesses more than 1,800 beautiful and unique species of flowering plants, lichens, mosses and fungi. Fees applicable.

PORONGURUP NATIONAL PARK

One of the most ancient landscapes in world, the range is considered to be more than 1.1 billion years old. Renowned for its giant karri trees and granite rock formations. Fees applicable.

STIRLING RANGE NATIONAL PARK | KOI KYEUNU-RUFF

Home of Mountain Country in Western Australia, this biodiversity hotspot is a mecca for bushwalkers, wildflower chasers, and nature lovers. In winter, it is also one of the few places in the state where snow occasionally falls. Fees applicable.

WALPOLE WILDERNESS AREA

Seven national parks, nature reserves and forest conservation areas make up the Walpole and Nornalup Wilderness area. With 363,000 hectares of rugged terrain, you'll find tingle forests, wetlands, and inlets.

WELLINGTON NATIONAL PARK

Loved for its beautiful waterways and rugged forest, experience 17,000 hectares of natural wonders. Surround yourself with unique jarrah, marri and yarri (blackbutt) trees, and expansive orchid blooms.



♀ AUSTRALIAN WILDLIFE PARK, ALBANY

WILDLIFE

A mecca for creatures big and small, spot wildlife along walking tracks, farm fields, coastal heaths and more. From woylies to kangaroos, tiny honey possums to blue tongue lizards and red-tailed black cockatoos – there's plenty of opportunities for an up-close experience with the animals that call this place home.

Wildlife Encounters

- Australian Wildlife Park, Albany
- Bunbury Wildlife Park, Bunbury
- Capes Raptor Centre, Margaret River
- Discover Deadly, Margaret River
- Denmark Animal Farm, Denmark
- Denmark Dinosaur World, Denmark
- Highland View Farm, Thomson Brook
- Sunflowers Animal Farm, Ludlow



♀ RED TAILED BLACK COCKATOO

♀ HIGHLAND VIEW FARM



♀ AUSTRALIAN WILDLIFE PARK, ALBANY





♀ KURRAH MIA WILDFLOWER TOUR, ALBANY



♀ AUSTRALIAN WILDFLOWER PARK, ALBANY

WILDFLOWERS

With almost 80 per cent of the flora found in this corner of the world completely unique, it's safe to say there's magic in these soils! One of just 36 biodiversity hotspots in the world, the region sees up to 300 species of delicate orchids bloom every spring.

Stirling Range National Park

Home to more than 1,500 species of native plants, with unique and abundant wildflowers, including Banksia, Dryandras, Queen of Sheba Orchids, and Mountain Bells.

Porongurup National Park

One of the most diverse offerings, more than 700 native species call the park home. Glimpse marri, jarrah and karri forests, as well as common wildflowers such as Purple Enamel Orchids, Cowslip Orchids, Scarlet Flame Peas, Candlestick Banksias and Native Wisteria.

Myrtle Benn Reserve

The Myrtle Benn Flora and Fauna Sanctuary is an interesting walk through Kojonup's Wandoo, Marri and Sheoak woodlands. Keep an eye out for Zebra Orchids, Little Pink Fairies, Rattle Beak Orchids and Blood Spider Orchids.

Torndirrup National Park

Home to a diverse floral landscape, you'll find a wild display of Woolly Bush, Sticky Tailflower, the pink Pimilea Rosea, and blue Scaevola Nitida.

D'Entrecasteaux National Park

Explore the coastal heath on the limestone cliffs where you'll find Blue Beard and South Coast Spider Orchids, Bearded Heaths and Hibbertias, as well as Donkey, Zebra, and Cherry Spider Orchids.

Karri Forest Explorer Drive

Including the forests around Big Brook Dam, Beedelup Falls, and the Cascades, a treasure hunt will gift you displays of Water Bush, Tassel Bush, Tree Hovea, White Clematis, Native Wisteria, Soap Bush, and Net-leaved Wattle.

Heartbreak Trail

Travelling through majestic old growth forest in Warren National Park, you'll spot 300-year-old Eucalypts, as well as Snail, Bird, and Karri Spider Orchids.

Northcliffe Forest Park

A 246 hectare nature reserve adjoining the Northcliffe townsite. Find wildflowers most of the year, including Forest Mantis, Diamond, Karri, Leaping, and Stumpy Spider Orchids.

Cape to Cape Track

Spectacular coastal scenery, fascinating geology, and sensational wildflowers dot the 124km walk between lighthouses. Keep an eye out for Yellow Cone Bush, Old Man's Beard, Vanilla Orchids, Native Wisteria, Clematis, Coastal Pimelea, and Purple Fairy Fan flowers.

Boranup Forest

Amid the towering 60m karri trees, a whole other world grows at ground level. The area boasts dappled sunlight, and floods of deep blue Karri Hovea, trailing Clematis, yellow Cone Bush, Patersonia, Forest Antis, and Pink Fairy Orchids.

Manea Park

Picture perfect in every respect, the limestone walk trail offers the perfect vantage point for spotting Kangaroo Paws, Mignonette Orchids, Dampiera, Cow Kicks, Milk Maids, Kick Bush, Donkey Orchids, White Spider Orchids, Cow Slips Orchids, and Jug Orchids.

Crooked Brook Forest

Popular during the warmer months, this picnic spot is a great place for searching out Pink Myrtle, White Heath, Yellow Candles, Blue Leschenaultia, and Blue Hovea.

Wellington National Park

Situated amongst the magnificent Jarrah forest, look out for Yellow Pea, White Clematis, White Myrtle, Buttercups, and Milk Maids.

Picking wildflowers is illegal in the South West, with fines of up to \$2,000. Please stick to the designated paths, and help preserve our native flora for future generations to enjoy.

WELLNESS

Take time to unwind and retreat to nature, where presence is preferred. Rise with the sun and enjoy breakfast with sandy toes and sea views or go forest bathing in the dappled light of giant kafri and tingle trees. Romantic escapes for you and your favourite person or spa retreats for you and your friends. Sink into a hot tub with a glass of bubbles or snuggle with a shiraz by the firelight. Discover inner quiet, disconnected from technology to spend quality time with loved ones.



SCAN TO LEARN MORE

📍 SUGARLOAF ROCK

ASTROPHOTOGRAPHY

Step away from the city lights and immerse yourself in the beauty of the South West's night skies. With minimal light pollution, there's unparalleled experiences for cosmos-chasers and astrophotography enthusiasts. And if you're very, very lucky, occasionally you can even encounter the rare 'dancing lady', or Aurora Australis. Known as the Southern Lights, it sees neon pink and green streaks cross the sky. Celestial wonders await.

Great spots for stargazing include:

Wellington Dam, Collie

With the world's biggest mural at your

feet and a canvas of constellations above, prepare to be amazed.

Fitzgerald River National Park, Bremer Bay

Barely a city light in sight, there's arguably no better spot to catch the wonder of the night sky. Just you, the ocean, and shooting stars as far as the eye can see.

Castle Rock, Eagle Bay

Cosmic moments unfurl over a majestic kingdom, with an epic coastline, secluded bays, and minimal light interference.

Lake Ewlyamartup, Katanning

Dark skies descend over an impressive salt lake, with quirky sculptures adding to the scenery for eager astrophotographers.

📍 MEELUP BEACH





FOREST BATHING

Lost in an emerald embrace, a cathedral of towering trees surrounds you in nature's hug. Sunlight, dances upon the forest floor like playful fairies. The air thick with the scent of damp earth and eucalyptus. A symphony for the senses. With each step, the world outside fades away. Moss-covered rocks invite you to sit and listen to the gentle rustle of leaves and the distant murmur of a hidden creek. This is forest bathing.

Wellington National Park, Collie

Escape the city and immerse yourself in a tranquil oasis of scenic rivers, lush forests, and the quiet call of red-tailed black cockatoos.

Donnelly State Forest, Pemberton

Just you and the peaceful depths of the trees. Dirt roads give way to beautiful green pools. The perfect place to sit and take in the serenity.

Tuart Forest, Capel

Shrouded in silence, this forest offers calming walks, wildlife watching, and the chance to connect with nature in a truly unique setting.

Boranup Forest, Margaret River Region

One of the most picturesque places in the South West, ash grey trees undulate across valleys sprinkled with wildflowers. Breathe your worries away.

SPAS & RETREATS

Rejuvenation and relaxation calling? Disconnect from distractions amidst breathtaking landscapes. Whether it's the sanctuary of a luxurious spa offering a plethora of pampering treatments, or the soothing warmth of a well-deserved massage. Indulge in revitalising facials, aromatherapy, and reflexology. Find your perfect wellness retreat.

- Empire Spa Retreat, Margaret River Region
- Vie Day Spa, Pullman Bunker Bay, Dunsborough
- Losari Spa Retreat, Margaret River Region
- Chimes Spa Retreat, Denmark
- Serenity House, Pemberton

FAMILY

Peace and quiet for the whole family. There's plenty of ways to unwind and unplug for a complete holistic holiday. Treat everyone to an organic paddock to plate experience, or ground yourself with a visit to see native wildlife in one of the regions family-friendly wildlife parks. Walk among the towering tree tops of the Karri forests, surrendering to all nature has to offer. Make mudpies near inland waterways, glee plastered across little faces. Or bring out a sense of wonder on a tranquil overnight farmstay, waking to the gentle sounds of life. Take the time to relax and recharge together.

YOGA & MEDITATION

The waves lapping behind you, no one around for miles, a gentle caress from the wind. There's no better place for the transformative practice of yoga and meditation than the glorious South West. Connect with nature and reach inner peace, meditating in the quiet hum of a lush green forest. The cicadas, birds, and rustling leaves your very own, private sound bath. Find your balance.

WELLNESS WEEKEND

A go-to destination for wellness escapes, you'll find the perfect 'Weekend Away In Wellness' in Australia's South West. Grab your special someone, or disconnect alone from the stress of life. Check into a retreat for some pamper time, or spend a winter cosied up by the fire, red-wine in hand. Picturesque views, lush green wineries, and surging ocean backdrops. Nature waits right on your doorstep. Here's our pick for downtime that nourishes the soul.

Day 1

Hike, walk, cycle, or kayak, going back to nature and the essence of spirit. Glide along a river, conquer mind and mountain, or exhale your worries away around each bend. Let the forest be your guide, the ocean your mentor. Listen and learn. Later, tuck yourself in at night in one of many sustainable and eclectic accommodation options. Think tiny cabins, houseboats, eco retreats, vineyards, or weathered beach homes. Watch the rain fall outside as you sip a delicate drop. Hear the waves crashing against the beach. Board games to play, and books to read.

Day 2

Take a day to be chauffeured around the South West's world-class wine regions. Cellar door to cellar door, tasting the finest terroir, and satisfying yourself with gourmet foods and fresh, organic produce. Spend a long lunch at a winery, no rush, just timeless views. Spend the night stargazing from a glamping tent, the constellations better than any tv show.

Day 3

Let your shoulders sag and your muscles unwind with a massage. The gentle chime of music lulling you into bliss. Follow up with meditation by the water, the lapping waves against the shoreline your personal soundtrack. Before heading home grab a locally produced picnic and watch the sun set in pretty pastels over an inky horizon. Heck, maybe you'll just stay just a little bit longer.

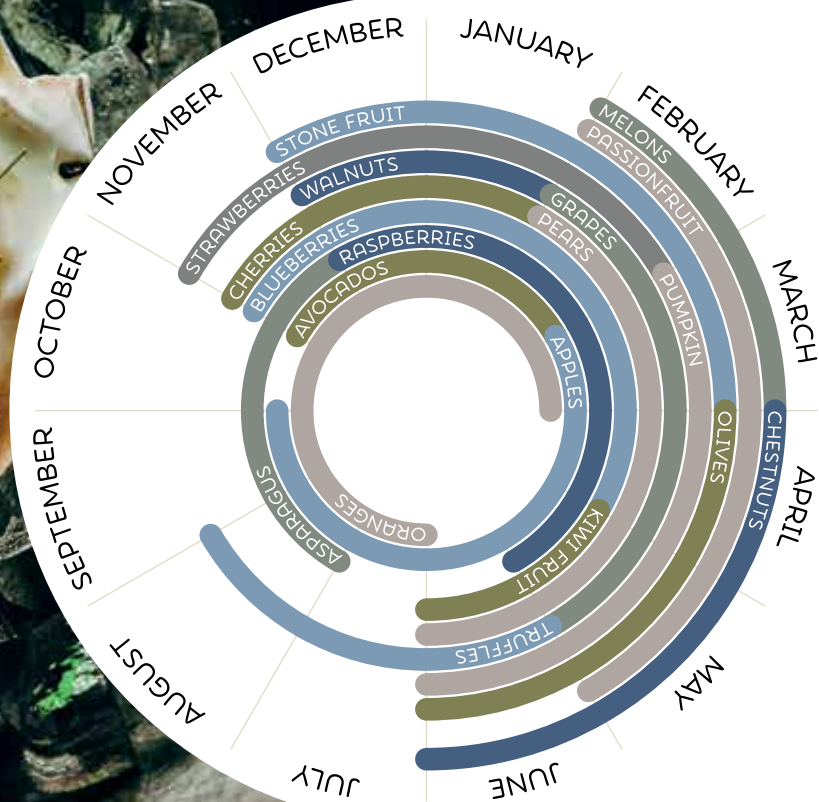


WINE, FOOD AND PRODUCE

Every bite and sip a transcendent journey to new depths of flavour. Savour sublime morsels, sweet on your tongue, freshly harvested from fertile soils, wild-caught from teeming waters, plucked from wild oceans. Curated and paired, crafted and cured with age-old wisdom passed down through generations. Follow four-legged truffle hunters, nose to the earth. Watch as they strike gold, tasting that full-bodied richness that lies beneath. Now, you're drinking bubbles with sand between your toes. Dancing with a gin fizz and a cotton-candy sunset. Raise a can of local craft beer and a cheese toasty by the campfire. Swirl a pinot gris, caressed by sea breezes. An ocean-aged cuvee stirred by the tides. Every sip revealing tales of an enchanting journey.



♀ CHESTNUT BRAE



SCAN TO LEARN MORE

♀ DE'SENDENT

FARMERS MARKETS

For fresh seasonal produce visit one of the region's many farmers markets. Here's some of our picks, but check with a local visitor centre for more.

- Albany Farmers Market
- Boyanup and Districts Farmers Market
- Bridgetown River Markets
- Bunbury Farmers Market
- Busselton Foreshore Markets
- Collie Goods Shed Markets
- Donnybrook Station Markets
- Eaton Early Bird Farmers Market
- Katanning Farmers Market
- Manjimup Farmers Market
- Margaret River Farmers Market
- Nannup Markets
- Origins Market Busselton
- Vasse Farmers Market



♀ JESTERS FLAT

PRODUCE

From succulent beef and lamb, raised on lush pastures. To fresh fruits and vegetables grown in the fertile south west soils. Culinary offerings are abundant. Enjoy hearty steaks or slow-roasted sticky lamb, complemented by the freshest produce, plucked from the ground. Grown locally, there's decadence in each bite, and the knowledge it's farmed by those who care most. Whether you're dining at a restaurant or preparing a family picnic, the regions local produce will not disappoint.

SEAFOOD

Discover a seafood lover's paradise, tasty morsels soaked by salt waters. Indulge in freshly shucked oysters, succulent akoya, and native fish straight from pristine ocean waters. For fresh water delights, savour trout, perch, and marron. Whether you prefer a fine dining experience at a local restaurant or a classic fish and chips by the beach, the region's seafood will leave you wanting more.

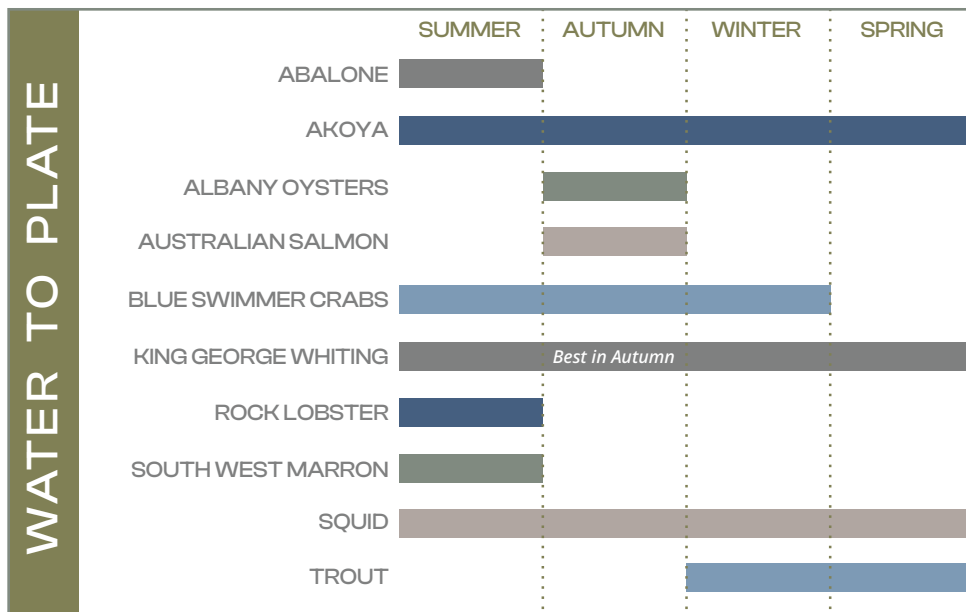
ORGANIC

Indulge in mouth-watering, locally grown fruits, vegetables, dairy, meat, and wine, all cultivated using sustainable and organic practices. Support local farmers, promote sustainability, and savor the superior taste of organic produce. From farmers markets straight to your plate, find a variety of organic options in the region to enhance a healthy lifestyle.

FOOD & WINE TRAILS

Discover our South West Foodie Road Trip at australiassouthwest.com/blog/south-west-foodie-road-trip/

WATER TO PLATE



Be sure to check local guides, licences and fishing restrictions. Some recreational fishing locations and open season dates are specific and fishing outside of these dates is prohibited. Some of the above are farmed only.



WINE AND CELLAR DOORS

♀ VOYAGER ESTATE

With a Mediterranean climate, rolling hills ribboned with vineyards, many a stone's throw from the ocean or mountains, Australia's South West is a haven for winemakers. There are five distinct winemaking areas - each with their own tastes, varieties, and standouts. Ready to embark on a wine adventure?

Geographe

A short journey south of Perth, you'll discover over 20 boutique, family-owned wineries. Nestled amidst rolling green hills, sheltered valleys, and fertile farmland, this captivating region offers a symphony of microclimates, giving rise to intriguing varieties like tempranillo and nebbiolo.

Margaret River Region

Nestled amidst the picturesque landscape lies a world-renowned wine region, celebrated for its exquisite drops. With over half a century of tradition, Margaret River region boasts nearly 100 cellar doors, many with their own sensational restaurants. Specialising in the exquisite cabernet sauvignon, chardonnay, and semillon sauvignon blanc blends, this region comprises just two percent of Australia's grape production but produces a remarkable twenty percent of the nation's premium wines.

Southern Forests

Wander through the enchanting Southern Forests, where ancient, towering karri forests and rolling farmland create a picturesque backdrop for a burgeoning wine region. Known for its sparkling wines

and sauvignon blanc, this idyllic destination offers a unique blend of southern latitude, high altitude, and a cool climate, providing the perfect conditions for cultivating exquisite pinot noir and chardonnay grapes.

Blackwood Valley

Discover the hidden treasure that is the Blackwood Valley, one of Australia's newest wine regions. Immerse yourself in a landscape where lush pastures, majestic trees, and gentle winding rivers create serene ambiance. This captivating destination hosts 11 cellar doors offering a variety of boutique wines, including cabernet sauvignon, chardonnay, riesling, sauvignon blanc, semillon, and shiraz. Experience the warm charm of country hospitality as you sit back and savour the exquisite flavors.

Great Southern

Embark on a journey south and keep going, until you hit the Great Southern, Australia's largest wine region. Composed of five distinct sub-regions - Albany, Denmark, Frankland River, Mount Barker, and Porongurup - this breathtaking landscape boasts over 40 cellar doors, each offering a unique wine experience. Blessed with a diverse tapestry of ancient soils, varying altitudes, and pristine conditions, the Great Southern creates a captivating cool climate environment. Renowned for its exceptional riesling and shiraz, this region also produces exquisite classic varieties such as chardonnay, cabernet sauvignon, and pinot noir.

BREWERIES & CIDERIES

Crack a cold can, the sweet sound of bubbles bursting forth. Or pour a brew, the taste of wheat and hops soon on your lips. The South West is one of Australia's thriving hubs for craft beer and cider enthusiasts, with a growing number of breweries and cideries scattered throughout. From family-friendly and rustic, to sleek and modern, there's always a new flavour to sip on.

- The Cidery, Bridgetown
- Shelter Brewing, Busselton
- Tall Timbers Brewing Co, Manjimup
- Wild Hop Brewery, Yallingup
- Beerfarm, Mettricup
- Eagle Bay Brewing Co., Eagle Bay
- Southcamp, Dunsborough

DISTILLERIES

A warm whisky by the fire, or a botanical gin to slowly sip away at. Award-winning spirits from bourbon to vodka can be found throughout the South West, making the perfect aperitif for your next feast.

- Ampersand Estates Rainfall Distillery
- Blackwood Valley Distillery, Bridgetown
- Beyond Distilling, Busselton
- Margaret River Distilling Co, Margaret River
- Great Southern Distilling Co, Albany
- The Dam at Raintree, Denmark



♀ THE LAKE HOUSE, DENMARK



♀ DONNYBROOK

FOODIES ROAD TRIP

Day 1 Perth to Great Southern

Embark on a journey south, leaving the city lights behind as you venture into the heart of the Great Southern region. Wind along Albany Highway, immersing yourself in the tranquil beauty of the calming countryside. Make a pit-stop in the thriving Frankland River wine sub-region, where passionate winemakers craft exceptional bouquets of red and white. Indulge in a leisurely lunch at a local winery, pairing a cheeky chardonnay with regional cheeses and charcuterie. Continue your exploration, meandering through scenic wineries nestled amidst the rolling hills of Mount Barker and the Porongurup Range. End your day in the charming embrace of a cosy B&B in the Porongurups or the historic city of Albany, where you can savor a delicious dinner featuring fresh seafood.

Day 2 Great Southern

Awaken in the Great Southern and listen to the expansive hush of the wide yonder that awaits. Explore the city of Albany, with its rich heritage and stunning coastal landscapes. Enjoy a leisurely brunch at a picturesque beach front café, overlooking the ocean and savoring a hearty helping of local smoked fish with avocado on sourdough. If you're visiting on a weekend, indulge in a delightful culinary adventure at the famous Albany Farmers Market, where you'll find a bounty of fresh, locally sourced produce to fill your basket. Pack a picnic lunch and enjoy it on one of the many beautiful beaches or parks in the area.

Day 3 Great Southern to Southern Forests and Valleys

Continue your journey winding through the ever-changing landscapes of the Great Southern. As you approach Denmark to the west, take your time exploring boutique wineries, nestled in the scenic Scotsdale and Mount Shadforth tourist drives. Indulge your taste buds with locally crafted gourmet delights, from savory condiments to sweet treats. Enjoy a delicious lunch at a local café or restaurant, featuring fresh, local produce like wild mushrooms or the foodie's gold - truffles. Keep heading inland to the Southern Forests, finishing up your day with a refreshing pint of craft beer or cider amidst the trees.

Day 4 Southern Forests and Valleys

Wake up in the serene Southern Forests, where towering karri forests and rolling farmland meld into a mesmerising backdrop. Discover the culinary treasures of the region, sampling local delicacies like marron, before going on a pleasant stroll through on one of hundreds of walking trails. Enjoy a gourmet dinner at a local restaurant, featuring locally sourced ingredients or for a truly immersive experience, try your hand at fishing on the Warren River. During the winter months, join a truffle dog on its exciting quest to unearth the precious black Périgord truffle in nearby Manjimup. Celebrate this culinary gem at the Truffle Kerfuffle festival in June or simply savor a truffle-infused meal at one of the region's renowned trufferies.

Day 5 Southern Forests and Valleys to Margaret River Region

Venture further northwards, into the renowned Margaret River wine region. Immerse yourself in the world-class wines and indulge in a gourmet winery lunch. Visit a local chocolate factory to sample delicious creations before exploring the nearby Caves Road for scenic drives. Before you take an afternoon nap from all the food, visit one of four show caves for a gentle tour. Come nightfall, indulge in a seafood feast at a beachfront restaurant, drink in one hand, fork stuffed with abalone or crayfish in the other.

Day 6 Margaret River Region to Perth

As your journey comes to a close, travel towards Balingup and Donnybrook, where you'll find fresh farm produce and the experience of fruit-picking. Enjoy a farm-to-table lunch at a local café or restaurant, featuring seasonal produce like strawberries and blueberries. Wander the picturesque Ferguson Valley, with its rolling hills and several boutique wineries and breweries before heading home, already dreaming of the next adventure.



ACCOMMODATION

♀ WILLOW WOOD
GLAMPING RETREAT

CARAVAN PARKS & CAMPING

Experience untouched wilderness. Marshmallows toasting in the winter. Sharing stories around the campfire. A flashlight gleaming off the eyes of cute possums, hiding out in peppermint trees.

Caravan parks in the South West are plentiful, with many boasting abundant facilities and creature comforts (hot shower anyone). Remember to research and book early to avoid disappointment, and before leaving any caravan park make sure all rubbish is removed and disposed of correctly.

For a full list of site across and to book, visit caravanwa.com.au and search via the South West region.

REST STOPS & FREE CAMPING

Sunrise and coffee by the beach. Leaves underfoot in misty-morning forests.

The roads less travelled often lead to remarkable places. Whether you're camping, caravanning, in the RV, or a converted tiny-home bus, the South West offers spaces for a quick rest stop before heading on.

Please note that to stay at most free-camping or overnight rest areas your vehicle must be fully contained. Check all restrictions and apply for permits online or through the nearest visitor centre.

Bunbury Geographe

- Bunbury Self-Contained 48 Hour Rest Stop (Wyalup Rocky Point and Ocean Drive)
- Capel Self-Contained 24 Hour Stop
- Brunswick Self-Contained RV Short Stay Rest Area
- Harvey Self-Contained RV Short Stay Rest Area
- Yarloop Self-Contained RV Short Stay Rest Area

Margaret River Region

Free camping is not permitted in the Shire of Margaret River.

Southern Forests & Valleys

- Boyup Brook's Querijup Pool
- Bridgetown Self-Contained 24 Hour RV Stop
- Greenbushes Pool
- Nannup's Karri Gully Picnic Site

Great Southern

- Albany's Torbay Inlet
- Albany's Cosy Corner East
- Albany's Betty's Beach
- Albany's Norman Beach
- Cranbrook's Lake Nunijup
- Katanning Self-Contained 48 Hour Overnight Rest Area

LUXURY STAYS

Sometimes you're not just chasing the stars in the sky on holiday, but the luxurious kind as well. Paradise and premier experiences go hand-in-hand here, with boutique chalets and high-end hotels.

From spas at your fingertips, to endless ocean views, decadence can be found in every corner of Australia's South West. Embark on a magnificent forest escape, a log wood fire, plush bed and high-class produce upon your arrival. Or stay by the sea, pampering soul and body in soaking tubs and steaming hot saunas.

For luxury stays, check out the accommodation listings on our website at australiassouthwest.com/listings

UNIQUE STAYS

Ever dreamed of drifting off to sleep in an old 1944 Dakota airplane? What about in a house built from hemp? Explore quaint and quirky accommodation, scattered throughout the South West.

The Lily Stirling Range, Amelup

Nestled beside an original 16th century-style working windmill, cute doesn't quite begin to cover it. Self-contained cottages, millers and winery quarters, and what we reckon is one of the most unique stays in the state... inside a renovated aeroplane.

Indica Hemp House, Wilyabrup

A luxury home situated among soothing surrounds, the home is made from local-grown industrial hemp, formulated into 'hemcrete'. There's even a hydrotherapy spa outside to soak in.

Houseboat Holidays, Walpole

Both magical and memorable, let the water gently rock you - and up to 9 of your

friends or family - to sleep when you step aboard this distinctive adventure. Discover the secluded Walpole wilderness from the comfort of your couch.

Tiny Cabins, Bunbury Geographe to Great Southern

A snug bed, cosy log fire, and the peace of nature at your doorstep... What's not to love about cabin and tiny home getaways. Check out Heyscape, Tree Chalets, Little House Republic, Hidden Cabins, 8 Paddocks, and The Sleeping Lady.

For more unique stays, check out the accommodation listings on our website at australiassouthwest.com/listings

GLAMPING

Unwind in luxury. Think bell tents decked out with warm beds. Festoon lights decorating the sky. Outdoor baths, ideal for relaxing and sipping champagne. And snuggling up beside olive groves. Romance at your fingertips, memories to be made.

Willow Wood Glamping Retreat, Margaret River Region

A calming refuge, just 15 minutes from Busselton, perfect for pausing the frantic pace of life. Retreat to two person or four person tents with ensuites. Nature a few steps outside.

Lake Brockman Tourist Park Glamping, Harvey

Nestled in the forest and overlooking the crystal clear waters of Logue Brook Dam. Sit out on your deck in the evenings and watch possums play, before a refreshing 'ice bath' dip in the morning.

Olio Bello Lakeside Glamping, Cowaramup

From the moment you arrive it's like time stands still. Each Eco safari bungalow, a reminder to simplify life and turn off technology. Become one with the olive groves around you as you gaze out over the shimmering lake.

Walk Talk Taste Luxe Farm Stay, Margaret River

A gourmet farm stay that provides true immersion in the heart of wine country. Bush luxe at its finest. With only one tent you're guaranteed privacy as you indulge in premium artisan produce and the finest sips.

FARM STAYS

Imagine waking to the gentle clucking of hens and the soft mooing of cows. The scent of fresh hay fills the air, the sun casting a warm glow over the rolling fields. Welcome to the enchanting farm stays of Australia's South West, where nature and nurture come together in perfect harmony.

Balingup Heights Hilltop Forest Cottages

High on a hilltop above the mist line, this 46-acre natural bushland property oozes rustic charm. Overlook breathtaking vistas, feed the farm animals, spot native birds, go fruit picking, or explore one of the many walking trails.

Discovery Parks - Margaret River

A holiday to remember, there are 18 fully self contained farm-style cottages, a bushy green camping area, playground, and a large barn-style campers' kitchen. Feed the farm animals daily, spot whales in the spring, and hike the nearby Cape to Cape track.

Donnelly River Village

A special little place tucked away in the enchanting karri forest. This chalet-style accommodation provides the chance to see possums, feed baby kangaroos, and make friends with emu chicks.

Chestnut Brae

If you're looking for a tranquil haven with a premium gourmet experience, look no further. Feed the goats and say hello to the turkeys, head off on a tour to learn how a Chestnut farm runs, pick fresh produce straight from the tree between March and June, or catch fresh water marron from the farm's dams.

Diamond Forest Farm Stay

Family and dog-friendly, this 50-acre farm in Pemberton is the place for crafting childhood memories. Tall timber forests close you in, a 3-acre dam is perfect for canoeing, and there's daily feeding of more than 100 animals.

Rac Karri Valley Resort

Majestic Karri forests encircle you at the resort, positioned on the edge of Lake Beedelup. Meet furry residents that include a friendly pig, pair of alpacas, chickens, guinea pigs and more. For a small fee you can feed them twice daily, or purchase bird seed to feed the friendly kookaburras and parrots from your balcony.

Eight Willows Retreat

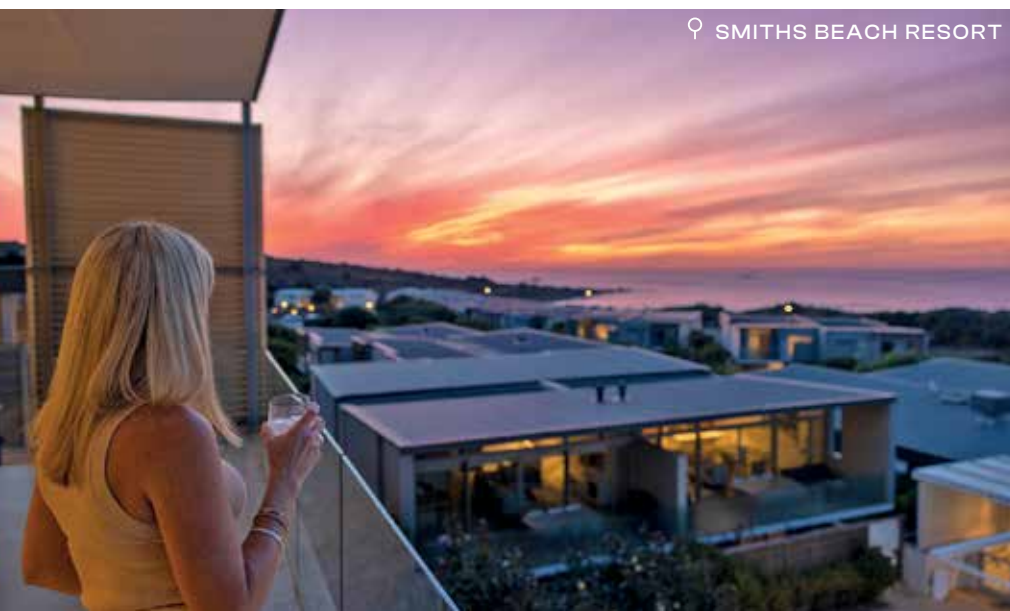
Where luxury meets the land, there's space and freedom to explore. Visit the fruit orchards to meet the resident chickens, or hand feed the retreat sheep before heading out on a bush walk.

Burnside Organic Farm

Enjoy paddocks roaming with livestock and revegetated wetlands, nestled among the natural environment of ancient karri trees and native bushland. Cows, sheep, geese and chickens call the property home, with guests invited to wander the kitchen garden, visit the friendly animals, and enjoy organic wine tasting.

Margaret River Holiday Cottages

Cuddle a calf? Yes please. With over 20 hand-reared animals roaming freely across the property, there's always an alpaca or sheep to feed. Fully self-contained cottages, play spaces, and nature trails sit within a sanctuary of peppermint and gum trees.





SUSTAINABILITY, INCLUSIVITY AND ACCESSIBILITY

♀ THE GAP, ALBANY

SUSTAINABILITY

Green getaways aren't just about the colour of the forest around you - they're also about developing a deep understanding and support for the environment. The South West thrives on building up businesses that promote eco and sustainability practices. Leave your trip with no footprints, but feeling like you've made a positive impact.

Busselton Jetty, Busselton

Eco-certified since 2003, the jetty works to be environmentally, socially, and economically sustainable. Dedicated to the conservation of their surrounding environment, they have championed a world-first Pile Rehabilitation project, to rehabilitate soft corals and sea sponges.

Dolphin Discovery Centre, Bunbury

A not-for-profit community organisation, dedicated to the protection of marine animals and the conservation of their environment. They work closely with universities and research partners to collect data that assists with the protection of local dolphin populations.

Cape To Cape Explorer Tours, Margaret River

Authentic and invigorating eco-conscious tours across the Margaret River region's Cape to Cape track, designed to be low impact and enhance appreciation of the natural environment.

Pemberton Discovery Tours, Pemberton

Endeavouring to be a carbon neutral business and encouraging visitors to do the same, sustainability is built into every level of their business, from paperless booking to their certified eco-tours.

Naturaliste Charters, Busselton to Bremer Bay

Championing conservation and advancing marine research is front and centre for this organisation. Their unwavering commitment to environmental stewardship comes from a dedicated crew, passionate about forging a profound connection between humans and the ocean.

Tree Chalets, Busselton

Run by 100% solar power, fed by rainwater, and with the surrounding trees offsetting all the carbon dioxide produced by your

stay, a stay in one of these eco chalets is all about embracing sustainability.

WOW Wilderness, Walpole

Offering guided tours along the Walpole inlet, proceeds from tickets go towards eco-projects such as Pathogen Hygiene Stations that protect the biodiversity of Western Australia's natural areas, and education of school children through the UR Walpole program.

Passel Estate, Margaret River

This small, family owned estate features natural bushland that following a bushfire in 2011, has become the relocation site for endangered Western Ringtail Possums. Learn about their wildlife conservation efforts on a wine sunset tour.

South West Eco Discoveries, Margaret River Region

Unique guided tours provide education on the flora, fauna, geography and history of the Margaret River Region on this eco-certified experience. Take a nocturnal animal tour at the Yelverton Brook Conservation Sanctuary.

INCLUSIVITY & ACCESSIBILITY

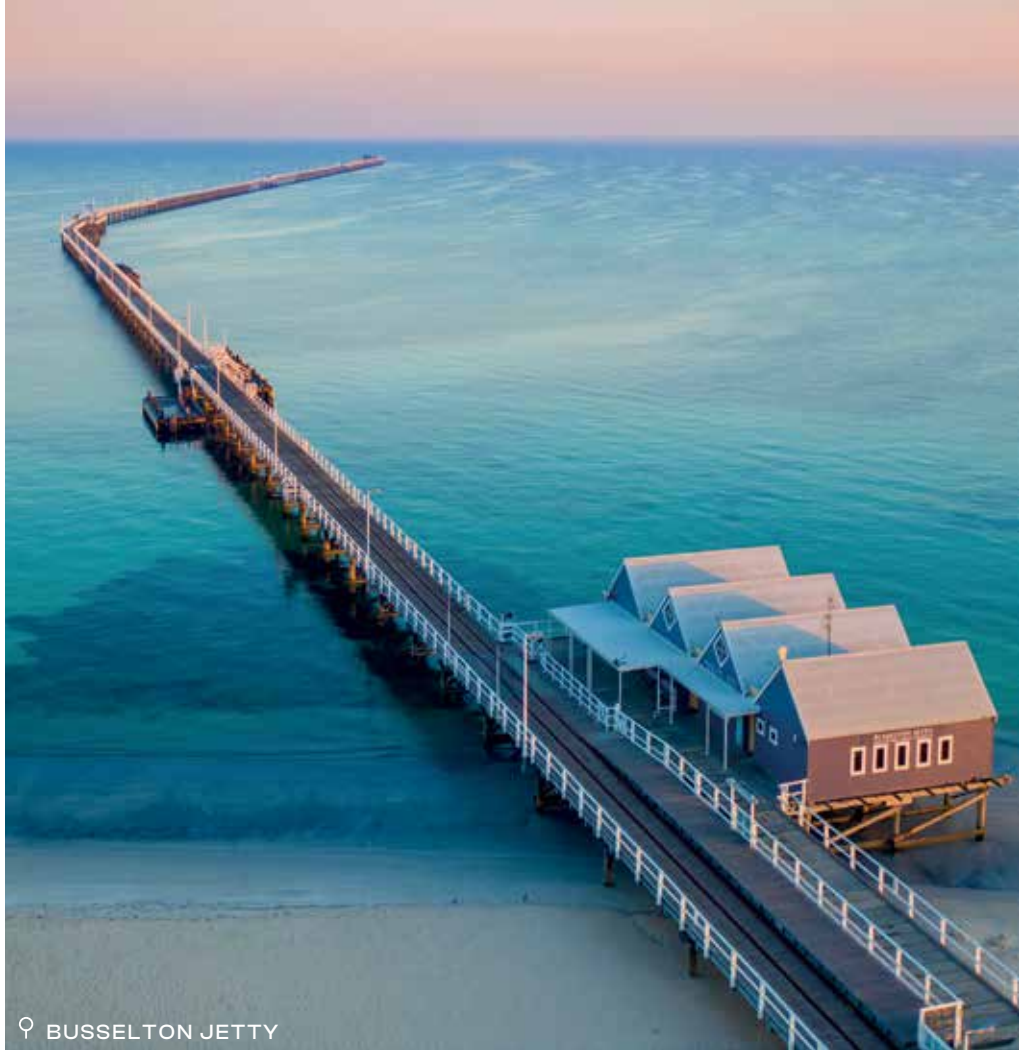
The region is on a continual mission to educate accommodation and tour operators on how to design their business to include all types of visitors.

This can include people in wheelchairs, people who need to travel with support, those who have learning challenges, members of the LGBTQTIA+ community, or individuals with vision or hearing loss.

To lead the way, australiassouthwest.com has an accessibility widget to better serve our content for people with disabilities. Options for profiles include colour blindness, visual impairment, motor skill disorders, ADHD, epilepsy, dyslexia, and more.

While we also promote diversity and inclusion education for members, creating safe spaces and signage acknowledging this for travellers.

When booking your trip to the South West, reach out to individual operators about their accessibility and inclusivity offerings.



♀ BUSSETON JETTY

♀ DOLPHIN DISCOVERY CENTRE, BUNBURY



PET FRIENDLY

Want to embark on a dreamy getaway, but can't bear to leave your furry best-friend at home? In Australia's South West, dogs are considered part of the family, and everyone knows family means no-one gets left behind (or forgotten). Sunset picnics by the lapping waves. Lunch with delectable drops and sweet treats. Or just a refreshing dip in postcard perfect waters. Everything's better when the adventure's four-legged friendly.

Please remember that not all spots in the South West are designed for dogs. There are many national parks where pets are not permitted as they pose a threat the country's native fauna. Check ahead for restrictions, and ask at local visitor centres for further dog-friendly locations.

ACCOMMODATION

Tired feet (and paws) need somewhere to pause, rest, and recharge. Set the water bowls up, grab the treatos, and sit back for a night under a twinkling tapestry of stars at accommodation from campsites to captivating holiday homes.

Bunbury Geographe

- Lake Kepwari, Collie
- Stockton Lake, Collie
- Glen Mervyn Dam, Collie
- Lake Brockman Tourist Park, Harvey
- Discovery Parks Bunbury Foreshore

Margaret River Region

- Bayview Geographe Resort, Busselton
- 'Daniel' cabin at Heyscape, Yallingup
- Little House Republic, Scott River East
- Caravan and camping sites at Mandalay Holiday Resort, Busselton
- Caravan and camping sites at RAC Busselton Holiday Park, Busselton
- Caravan and Camping sites at Summerstar Busselton Lazy Days Park, Busselton
- Caravan and Camping sites at Summerstar Margaret River Tourist Park, Margaret River
- Caravan and Camping sites at Summerstar Riverview Tourist Park, Margaret River
- Select places at In House Holidays, Margaret River Region
- Select places at Private Properties, Margaret River Region
- Select places at Cape Executive Holiday Properties, Margaret River Region

Southern Forests & Valleys

- Diamond Forest Farm Stay, Pemberton
- Greenbushes Pool, Greenbushes
- Sues Bridge, Blackwood River National Park
- Big Brook Arboretum, Pemberton
- Northcliffe Holiday Park, Northcliffe
- Loose Goose Chalets, Nannup
- Caravan and Camping sites at Summerstar Rest Point Caravan Park, Walpole

Great Southern

- The Cottage at Samphire Collection, Albany
- The View, Albany
- Emu Beach Chalets, Albany
- Native Dog Cabin, Bremer Bay
- Caravan and Camping sites at Big4 Emu Beach Holiday Park, Albany
- Caravan and Camping sites at Bremer Bay Beaches Caravan Park, Bremer Bay
- Karri Aura Tourist Park, Denmark

BEACHES

The shoreline extending before you. Your pooches' paws playfully galloping through the water. Check out these mesmerising pet-friendly coastal spots.

Bunbury Geographe

- Back Beach, Bunbury
- Dalyellup Beach, Bunbury
- Binningup Beach, Harvey Region
- Peppermint Grove Beach, Capel
- Stratham Beach, Capel

Margaret River Region

- Bunker Bay, Cape Naturaliste
- Dunsborough Foreshore, Dunsborough
- Gnarabup Dog Beach, Margaret River
- Flinders Bay, Augusta

Southern Forests & Valleys

- Peaceful Bay, Walpole
- Windy Harbour Beach, Windy Harbour (east of the boatramp)

Great Southern

- Lights Beach, Denmark
- Middleton Beach, Denmark
- Parry Beach, Denmark
- Prawn Rock Channel Dog Beach, Denmark
- Frenchman Bay Beach, Albany
- Whakers Cove/Fisheries Beach, Albany

Check with local visitor centres for restrictions on which areas of the beach, and times of the year, dogs are allowed.



♀ BACK BEACH, BUNBURY

ADVENTURES

From magical forest odysseys to arboretum's bursting with sights and smells (and LOTS of trees to pee on), adventuring pooches are bound to enjoy these South West escapades.

Bunbury Geographe

- Gnomesville, Ferguson Valley
- Golden Valley Tree Park, Balingup

Margaret River Region

- Wadandi track, Margaret River Region
- Studio Gallery and Bistro, Yallingup

Southern Forests & Valleys

- Glenoran Pool, Nannup (on lead)
- Manjimup Heritage Park, Manjimup (on lead)
- Big Brook Dam, Pemberton
- Pemberton Pool, Pemberton
- Pemberton Tramway, Pemberton

Great Southern

- Harewood Forest Walk, Denmark
- Albany Heritage Park (excluding the National ANZAC Centre), Albany
- Uredale Point Heritage Trail, Albany

CAFES, WINERIES, & BREWERIES

Delicious puppacinos and a bite (or bark). Sometimes you have to live the alfresco life as a dog owner, but these options will have you enjoying the view from outside.

Bunbury Geographe

- Dolphin Discovery Centre, Bunbury
- Stirling Cottage Kitchen, Harvey

Margaret River Region

- White Elephant Café, Gnarabup
- Beerfarm, Metricup
- Shelter Brewing Co, Busselton
- Passel Estate, Cowaramup
- Fishbone Wines, Wilyabrup
- Clairault Streicker Wines, Wilyabrup
- Swings and Roundabouts, Yallingup
- Cape Mentelle, Margaret River
- Woody Nook Wines, Wilyabrup
- Caves House Hotel, Yallingup
- Rivendell Winery, Yallingup
- Wild Hop Brewing Company, Yallingup

Southern Forests & Valleys

- The Cidery, Bridgetown
- Southern Forests Chocolate Company, Pemberton
- Tall Timbers, Manjimup

Great Southern

- Black Cockatoo Cafe, Kojonup
- The Lake House Denmark, Denmark
- The Dam, Denmark
- Earl of Spencer Historic Inn, Albany
- Kate's Place, Albany

BEFORE YOU ARRIVE



♀ WHALES, MEELUP BEACH

HOW TO USE THIS GUIDE

Australia's South West is not just about fleeting moments, it's about seeking deeper connections, soaking up wild nature, and uncovering age old stories. Not sure where to begin? Use this guide to help you plan your next South West trip.



♀ AERIAL ADVENTURE PEMBERTON

GETTING TO AUSTRALIA'S SOUTH WEST

Flights arrive into Western Australia from all Australian capital cities, with international arrivals available at perthairport.com.au. East coast visitors can also access Perth via rail.

Australia's South West is located just a few hours' drive south of the state's capital city, Perth, with both self-drive and tour options available. While cruises disembark at a variety of ports.

Busselton Margaret-River airport also welcomes direct flights from both Sydney and Melbourne into the region multiple times a week. With Albany Airport accommodating flights from within the state.

ACCESSIBILITY IN THE SOUTH WEST

Australia's South West aims to be an inclusive tourist destination, and as such is continually developing products, infrastructure, services, and amenities for access. Contact operators directly for more information on their services. Find out more on page 69.

BE PREPARED

Consider arranging travel insurance for your trip to cover injury or illness, and check your policy for high risk adventure activities.

When travelling off the beaten track, please be sure to notify park rangers and family members.

BEFORE YOU ARRIVE

Grab a park pass

Visitor fees apply at National Parks in Australia's South West and a number of passes are available to suit your holiday. Park Passes can be bought online and are also available at a range of outlets including selected visitor centres. Selected National Park camp sites can be pre-booked at parkstay.dbca.wa.gov.au/searchavailability/information. For more information visit exploreparks.dbca.wa.gov.au or contact Parks and Wildlife on +61 8 9219 9000.

Flying a drone

Check the Department of Biodiversity, Conservation & Attractions website exploreparks.dbca.wa.gov.au/drones-parks, as well as the Civil Aviation Safety Authority website casa.gov.au/knowyourdrone/drone-rules for rules and regulations for piloting drones in Australia's South West.

WHEN YOU GET HERE

Road safety

In Australia, cars travel on the left of the road and speed is in kilometres (km) per hour. When overtaking, make sure you have a clear view of oncoming traffic and use your indicator to signal your intentions to other drivers.



Watch out for wildlife

Remain vigilant when driving country roads, particularly at dawn and dusk. It is not uncommon to encounter native fauna including kangaroos and emus, as well as stock such as cows and sheep wandering the road. Take note of safety signage regarding interacting with wildlife, and be aware of animals while walking, hiking, or camping.


Water safety

Before entering any body of water in Australia's South West, familiarise yourself with the risks of the area and check signage for warnings of danger. If you are unsure of swimming conditions ask for advice from local visitor centres or authorities. When possible, swim between the red and yellow flags - these mark the safest and most regularly supervised areas. Tread carefully when stepping on rocks as they may be slippery, and be aware of freak swells that may knock you off.

Fire Safety

At some campgrounds, campfires are not permitted at any time. At others, they are permitted seasonally. Always be wary when lighting campfires, and never leave a fire unattended. Restrictions can be imposed without notice at any time or place, so before lighting a campfire, make sure to always check for the most up to date information, as well as information on Bushfire Advice when travelling through the region at emergency.wa.gov.au

VISITOR SERVICING

 To get the most out of your Australia's South West holiday, speak to the experts at one of the many visitor centres or Community Resource Centres (CRCs) in the region. The friendly staff can offer advice on accommodation, tours, services and the best things to see and do in the region. Look for the blue and yellow italic or white and blue 'i' signs to find a visitor centre on your holiday route.

IMPORTANT CONTACTS

Emergency services (police, ambulance, fire brigade): 000 or 112 (mobile)

Roadside assistance (RAC): 13 11 11

Road conditions (Main Roads): 13 81 38
mainroads.wa.gov.au

QUALITY TOURISM ACCREDITED BUSINESS



This symbol indicates that a tourism business has met nationally endorsed industry standards and is committed to providing quality products and services. When you book with a Quality Tourism Accredited Business, you'll be supporting genuine tourism businesses and local communities.



SCAN TO LEARN MORE

START DREAMING

1. @edronenolimits

2. @kirby.spencer

3. @discovermargaretriver

4. @racquellaaa

ADVENTURE

1. Windsurfing
2. Aerial Adventure
3. Kayaking
4. Mountains/Hiking

Leave only footprints, take only memories — and in Australia's South West, we've got some incredible ones waiting.

Brag-worthy shots of crystal coastlines or enchanting dappled forests abound. Snap a frolicking whale in the surf or selfie with the glorious wildflowers.

Tag [@australias_southwest](#) or use the hashtag [#AustraliasSouthWest](#) and you just might feature here in the future!



1. @Pullmanbunkerbay



2. @cabincreative

WINE, FOOD & PRODUCE

1. Charcuterie, Pullman Bunker Bay
2. Green Door Wines, Ferguson Valley
3. Marron, de'sendent
4. Pizza, Bungalow Dunsborough



3. @desendentdining



4. @Shelbythekelpie



1. @_wherestheway



2. @angelcott_productions



4. @_racheljane



3. @_sheenakaur

WELLNESS

1. Ocean gazing, Margaret River Region
2. Aurora Australis, Denmark
3. Cabin Stay, Margaret River
4. Forest bathing, Boranup Forest



1. @rs.photog_



2. @theverticalpixel



4. @maybellinehiew



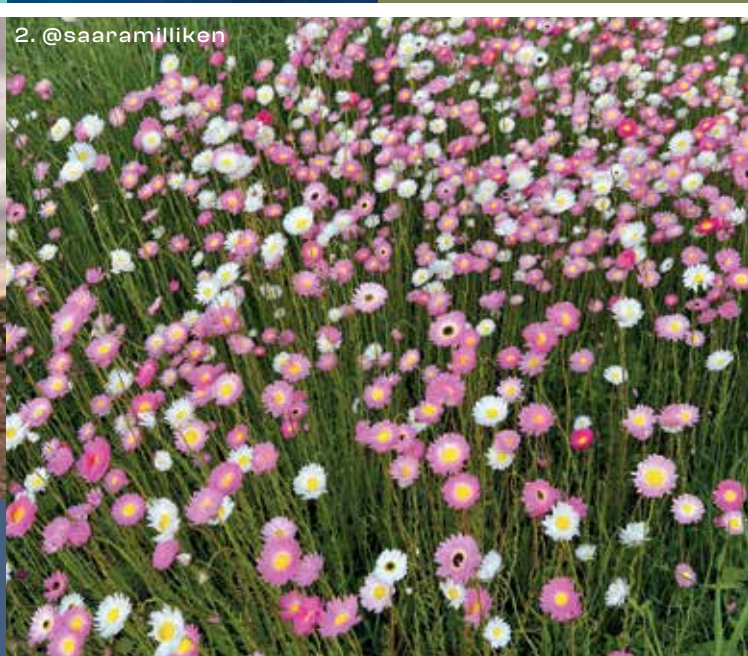
3. @curtis_n_kora

NATURE & WILDLIFE

1. Point Picquet, Dunsborough
2. Pink Lake, Cranbrook
3. Whales, Coastline
4. Emu, Boranup Forest



1. @heyscape



2. @saaramilliken

EVENTS

1. Groovin in the Grove, Heyscape
2. Bloom Festival, Great Southern Treasures



1. @southernexposures.dh



2. @icathwalks



4. @aegirphotography



3. @kirby.spencer

CULTURE & HERITAGE

1. Indigenous Sculpture
2. Whaling Station
3. Wadandi Boodja Statue
4. Lighthouse

Australian Jewellery by John Miller design



Art to Wear | Since 1973

Margaret River: Mon to Sat 10am - 4pm
Yallingup: Mon to Fri 10am - 4pm
or by appointment 0401 293 680



johnmillerdesign.com

